

# MADAULA S.A.

[www.madaula.com](http://www.madaula.com)



LIVE TOOLING FOR CNC LATHES

ANGETRIEBENE WERKZEUGHALTER FÜR CNC-DREHMASCHINEN

PORTE-OUTILS TOURNANTS POUR CENTRES DE TOURNAGE

PORTAHERRAMIENTAS ROTATIVOS PARA TORNOS CNC



More than 50 years increasing productivity  
Über 50 Jahre zum Dienst der Produktivität  
Plus de 50 ans au service de la productivité  
Más de 50 años incrementando la productividad



**MADAULA S.A.**  
[www.madula.com](http://www.madula.com)®



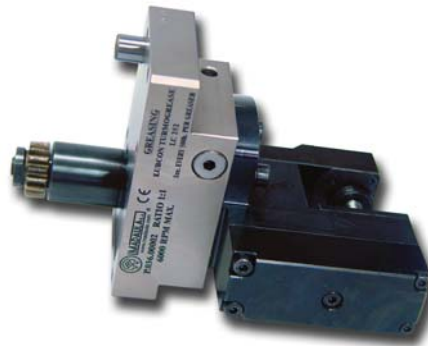
A very performant team at your service  
Ein sehr flexibles Team zu Ihrer Verfügung  
Une équipe très compétente à votre service  
Un equipo altamente competente a su servicio

- . Wide production range
- . High precision preloaded bearings
- . Precise and rigid compact manufacture
- . No maintenance, greased for life
- . Hermetically sealed spindle
- . To be adapted to any model of machine
- . 100% checked and tested. Certification available

- . Ein vollständiges Fertigungsprogramm
- . Hochpräzise, vorbelastete Wälzlager
- . Präzise und solide, starre Bauart
- . Wartungsfreie, Dauerschmierung
- . Hermetische Abdichtung der Spindel
- . Kann in jede Maschine eingebaut werden
- . Unsere Produkte sind zu 100% überprüft und getestet. Messprotokolle erhältlich

- . Programme de production complet
- . Roulements de haute précision préchargés
- . Fabrication de précision, solide et très rigide
- . Entretien minimum, graissage à vie
- . Parfaite étanchéité de la broche
- . Adaptables sur toutes les machines
- . 100% rodés et vérifiés. Attestation disponible

- . Completo programa de producción
- . Rodamientos de precisión precargados
- . Construcción sólida y precisa
- . Engrase a vida, sin mantenimiento
- . Husillo perfectamente hermético
- . Adaptable a cualquier tipo de máquina
- . Inspeccionados y rodados al 100%. Certificado disponible



ABS TM Lic. Komet

Coromant Capto TM

HSK DIN 69063

Collet-Spannzange-Pince-Pinza  
DIN 6499 B

Bilz

Weldon, Whistle Nocht

Mill/cutter holder DIN 6358  
Aufsteckfräserdorn DIN 6358  
Porte-fraises DIN 6358  
Porta-fresas DIN 6358

**Wide range of live tooling on stock**  
**Breites Angebot von Werkzeughaltern ab Lager**  
**Large gamme de porte-outils tournants en magasin**  
**Completa gama de porta-herramientas en stock**



- . Smooth and quiet running thanks to the high precision gearing system
- . Any type of driving available
- . Spindle types adapted to your requirements
- . Available with coolant through spindle
- . Innovative high technology

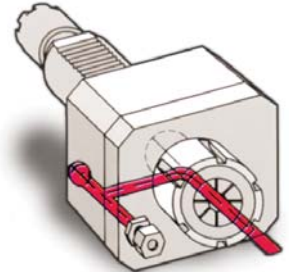
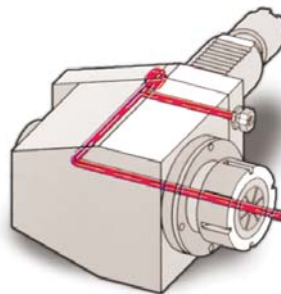
- . Ruhiger und geräuscharmer Lauf dank der hochpräzisen Verzahnung der Zahnräder
- . Alle Antriebstypen verfügbar
- . Geeignete Spindelart nach Ihren Anforderungen
- . Lieferbar mit Kühlmittelzuführung durch die Spindeln
- . Innovative Hochtechnologie

- . Fonctionnement souple et silencieux, grâce à la denture de précision des engrenages
- . Tous types d'entraînement disponibles
- . Tous types de sortie de broche adaptés à vos besoins
- . Possibilité d'arrosage par le centre de la broche
- . Technologie innovatrice

- . Funcionamiento suave y silencioso gracias al dentado de precisión de los engranajes
- . Ponemos a su disposición cualquier tipo de accionamiento
- . Tipos de husillos adecuados a sus necesidades
- . Disponible con paso de refrigerante por el interior del husillo
- . Tecnología innovadora



And many more. Und anderen . Et encore plus. Y otros más



Available with coolant through spindle  
Lieferbar mit Kühlmittelzuführung durch die Spindeln  
Possibilité d'arrosage par la broche  
Disponibles con paso de refrigerante por el interior del husillo



High rotational speed  
Hohe Spindeldrehzahl  
Vitesse de rotation élevée  
Alta velocidad de rotación



**MADAULA S.A.**  
www.madaula.com®

# TABLE OF CONTENTS



	PAGE
BARUFFALDI-VDI	2 / 3
DUPLOMATIC-VDI	4 / 5
SAUTER-VDI DIN-5480	6 / 7
SAUTER-VDI DIN-5482	8 / 9
BIGLIA	10
CMZ	
TL-15M, TB-46M, TB-67M, TL-20M, TL-25M	11 / 12
TBI-520 VDI-50	13
DOOSAN INFRACORE / DAEWOO	14 / 15
EMCO	16 / 17
HAAS	18
MAZAK	
MULTIPLIX 610/6100 620/6200	19
SQT-100M / 10M(S) , 200M / 250M / 15M / 18M, NEXUS 100M / 150M / 200M / 250M	20
SQT-300M (S) / 28M / 30M(S), NEXUS 300M / 350M / 400M / 450M	21
MIYANO	22
MORI SEIKI	
SL / ZL 150 MC / SL 153-154 MC	23
SL / ZL 200 / 250MC SL-203 / 204 / 253, SL-2500Y SL-300	24
NL 1500-2000-2500-3000	25
MURATEC	26
NAKAMURA	
TW-10, SC150, SC250, WT-20, WT-250, TMC18, WTW-150, WTS-150	27
TW-20, SC300, STW-40, TW-30, SC450,	28
WT-100, NTY3	29
OKUMA	
LB-10M, LB-200M LB-15M, LU-15M, LB-300M, CAPTAIN L370-M	30
LB-25M, LU-25M, LB-400M, CAPTAIN L470-M LB-35M, LU-35M	31
LT-10M LT-15M LT-25M	32
LB 2000-2500-3000-4000	33
ROMI	34
SCHAUBLIN	35

more...

	PAGE		PAGE
AFM	8,9	LEADWELL	4,5
AMK	8,9	LEALDE	8,9
AVM	4,5,8,9	MAGDEBURG	8,9
AXA	8,9	MAHO	8,9
BOEHRINGER	6,7,8,9	MANURHIN	6,7
BRAUNGART	6,7	MAS-KOVOSVIT	6,7,8,9
CAZENEUVE	8,9	MAX NOVO	8,9
CINCINNATI	4,5,6,7,8,9	MHP	8,9
CSEPEL	8,9	MAXMULLER	8,9
DAINICHI	6,7,8,9	MONARCH	8,9
DMT	8,9	MONFORTS	6,7,8,9
DÖRRIES-SCHARMANN	8,9	MWF	8,9
DS6-PONY	8,9	NILES	8,9
EMAG	6,7	PADOVANI	4,5
EMCO	4,5,6,7,8,9	RAMO	6,7,8,9
FAMAR	6,7	REALMECA	6,7
FAMOT	6,7	RIKA	6,7
FEMCO	2,3	SCHERER	6,7,8,9
GEMINIS	8,9	SCHÜTTE	8,9
GILDEMEISTER	4,5,6,7,8,9	SOMAB	6,7,8,9
GOODWAY	4,5,6,7,8,9	SONIM	8,9
GRAZIANO	6,7,8,9	SPINNER	6,7,8,9
GURUTZPE	2,3,8,9	STOREBRO	8,9
HANKOOK	4,5,8,9	TAKANG	4,5
HEID	4,5,8,9	TECHNO	6,7
HERNAULT	4,5	TEZSA	6,7,8,9
HERNAULT-TOYODA	4,5	TOS	8,9
HESSAPP	8,9	TRAUB	8,9
HEYLINGENSTAEDT	8,9	VICTOR	4,5,8,9
HITACHI-SEIKI	4,5	VOEST-ALPINE	6,7,8,9
HYUNDAI	4,5	WEILER	4,5,6,7,8,9
INDEX	6,7	WINTEC	4,5,8,9
JATOR	6,7,8,9	ZPS	4,5
J.G.WEISSER	6,7		
JINN-FA	6,7		
KERN	8,9		
KUMMER	6,7		

We also manufacture for  
Hardinge, Traub, etc.

Live tools for all types of  
lathes. Please ask for  
specific literature.

Up to 25.000 r.p.m

# BARUFFALDI-VDI

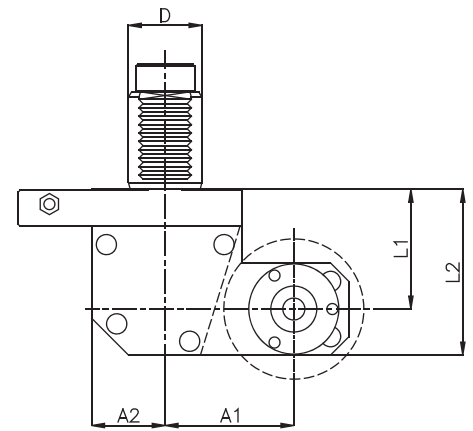
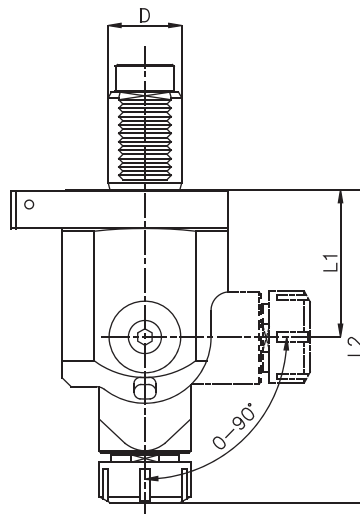
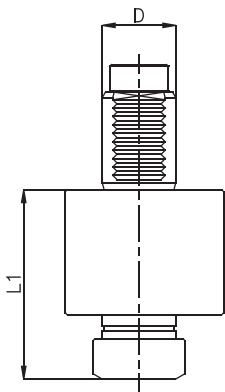
VDI-30, VDI-40, VDI-50, VDI-60



P.000 AXIAL  
P.005 AXIAL INTERNAL COOLANT

P.021 RADIAL ADJUSTABLE

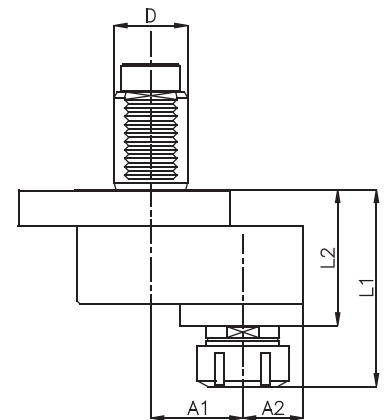
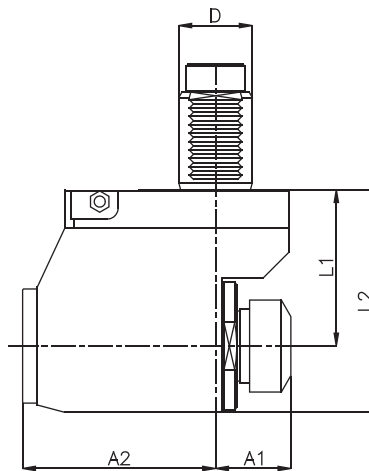
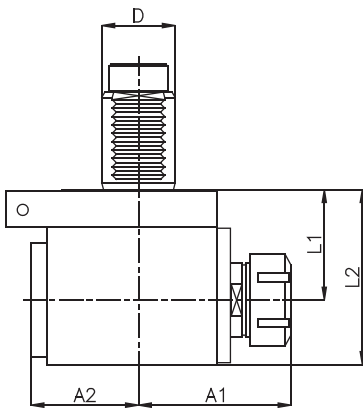
P.030 SAW-MILL



P.010 RADIAL  
P.016 RADIAL INTERNAL COOLANT

P.011 RADIAL SET-BACK  
P.017 RADIAL SET-BACK INTERNAL COOLANT

P.001 AXIAL OFFSET  
P.006 AXIAL OFFSET INTERNAL COOLANT



# BARUFFALDI-VDI

## VDI-30, VDI-40, VDI-50, VDI-60



Order Code	MODEL	Tool Style	Spindle	MAX RPM	GearRatio	Nm	D	L1	L2	A1	A2
BF.000.30	VDI-30	AXIAL	ER-25	6000	1:1 >	32	Ø 30	105			
BF.021.30	VDI-30	ADJ ANGLE	ER-16	6000	1:1 <	7	Ø 30	65	143		
BF.030.30	VDI-30	SAW-MILL	Upon request	3000	1:1 <	32	Ø 30	65	90	50	40
BF.010.30	VDI-30	RADIAL	ER-25	6000	1:1 <	32	Ø 30	58	90	75	50
BF.011.30	VDI-30	RADIAL SET-BACK	ER-25	6000	1:1 >	32	Ø 30	70	109	34	83
BF.001.30	VDI-30	AXIAL OFFSET	ER-25	6000	1:1 >	32	Ø 30	100	68	65	30

Order Code	MODEL	Tool Style	Spindle	MAX RPM	GearRatio	Nm	D	L1	L2	A1	A2
BF.000.40	VDI-40	AXIAL	ER-32	5000	1:1 >	55	Ø 40	103			
BF.021.40	VDI-40	ADJ ANGLE	ER-25	5000	1:1 <	14	Ø 40	79	169		
BF.030.40	VDI-40	SAW-MILL	Upon request	3000	1:1 <	55	Ø 40	65	90	70	40
BF.010.40	VDI-40	RADIAL	ER-32	5000	1:1 <	55	Ø 40	60	95	85	58
BF.011.40	VDI-40	RADIAL SET-BACK	ER-32	5000	1:1 >	55	Ø 40	85	125	40	105
BF.001.40	VDI-40	AXIAL OFFSET	ER-32	5000	1:1 >	55	Ø 40	107	74	50	33

Order Code	MODEL	Tool Style	Spindle	MAX RPM	GearRatio	Nm	D	L1	L2	A1	A2
BF.000.50	VDI-50	AXIAL	ER-40	4000	1:1 >	86	Ø 50	110			
BF.021.50	VDI-50	ADJ ANGLE	ER-32	4000	1:1 <	35	Ø 50	82	187		
BF.030.50	VDI-50	SAW-MILL	Upon request	2500	1:1 <	86	Ø 50	65	90	85	40
BF.010.50	VDI-50	RADIAL	ER-40	4000	1:1 <	86	Ø 50	68	110	99	70
BF.011.50	VDI-50	RADIAL SET-BACK	ER-40	4000	1:1 >	86	Ø 50	95	135	42	117
BF.001.50	VDI-50	AXIAL OFFSET	ER-40	4000	1:1 >	86	Ø 50	150	107	55	46

Order Code	MODEL	Tool Style	Spindle	MAX RPM	GearRatio	Nm	D	L1	L2	A1	A2
BF.000.60	VDI-60	AXIAL	ER-50	3000	1:1 >	176	Ø 60	140			
BF.021.60	VDI-60	ADJ ANGLE	ER-32	3000	1:1 <	35	Ø 60	85	190		
BF.030.60	VDI-60	SAW-MILL	Upon request	2000	1:1 <	176	Ø 60	90	132	85	55
BF.010.60	VDI-60	RADIAL	ER-50	3000	1:1 <	176	Ø 60	83	135	123	80
BF.011.60	VDI-60	RADIAL SET-BACK	ER-50	3000	1:1 >	176	Ø 60	120	173	42	163
BF.001.60	VDI-60	AXIAL OFFSET	ER-50	3000	1:1 >	176	Ø 60	165	115	70	50

OTHER MODELS PLEASE ASK

© MADAULA S.A. SUBJECT TO CHANGE WITHOUT NOTICE

**OPTION CODE**

- CW INPUT = CW OUTPUT
- CW INPUT = CCW OUTPUT

**FOR MORE INFORMATION ASK FOR SPECIFIC LITERATURE**

**ALSO AVAILABLE:**

- SPEED INCREASING
- SPEED REDUCTION
- RADIAL TOOL REVERSES FOR SUB-SPINDLE



# DUPLOMATIC-VDI

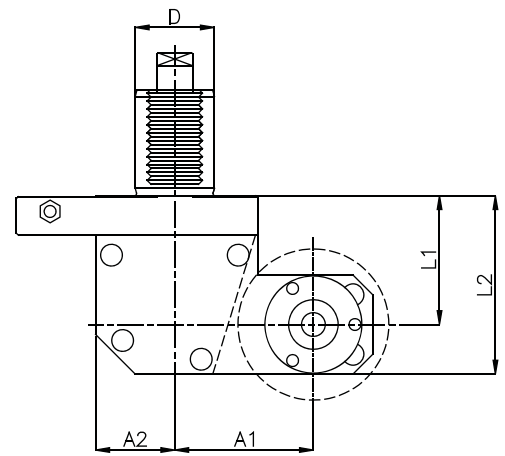
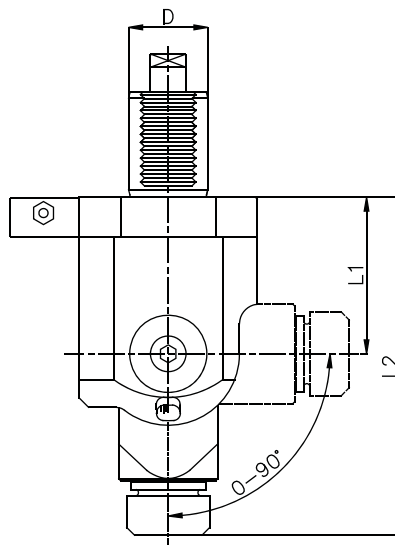
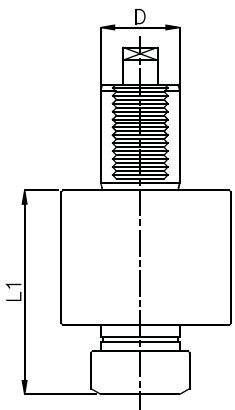
VDI-30, VDI-40, VDI-50, VDI-60



P.000 AXIAL  
P.005 AXIAL INTERNAL COOLANT

P.021 RADIAL ADJUSTABLE

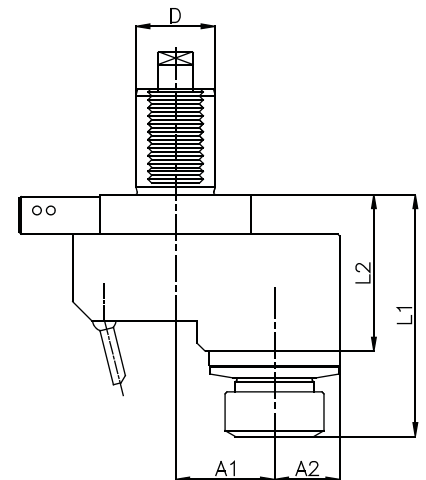
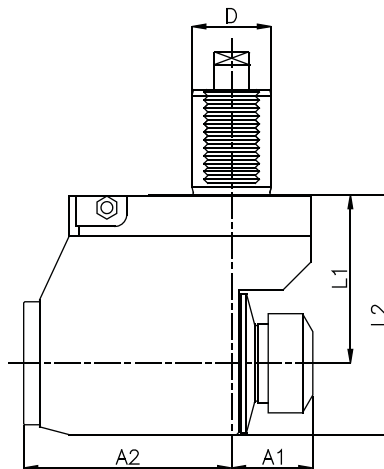
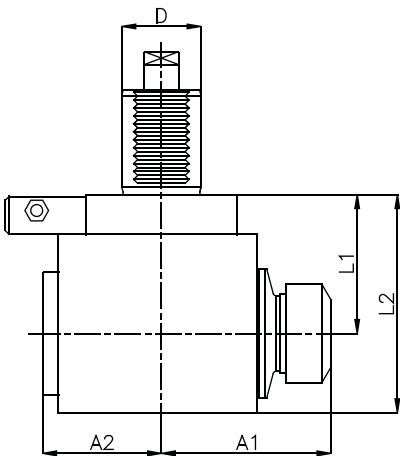
P.030 SAW-MILL



P.010 RADIAL  
P.016 RADIAL INTERNAL COOLANT

P.011 RADIAL SET-BACK  
P.017 RADIAL SET-BACK INTERNAL COOLANT

P.001 AXIAL OFFSET  
P.006 AXIAL OFFSET INTERNAL COOLANT





# DIPLOMATIC-VDI

VDI-30, VDI-40, VDI-50, VDI-60



Order Code	MODEL	Tool Style	Spindle	MAX RPM	GearRatio	Nm	D	L1	L2	A1	A2
DU.000.30	VDI-30	AXIAL	ER-25	6000	1:1 >	32	Ø 30	105			
DU.021.30	VDI-30	ADJ ANGLE	ER-16	6000	1:1 <	7	Ø 30	65	143		
DU.030.30	VDI-30	SAW-MILL	Upon request	3000	1:1 <	32	Ø 30	65	90	65	40
DU.010.30	VDI-30	RADIAL	ER-25	6000	1:1 <	32	Ø 30	58	90	75	50
DU.011.30	VDI-30	RADIAL SET-BACK	ER-25	6000	1:1 >	32	Ø 30	70	109	45	71
DU.001.30	VDI-30	AXIAL OFFSET	ER-25	6000	1:1 >	32	Ø 30	100	68	40	35

Order Code	MODEL	Tool Style	Spindle	MAX RPM	GearRatio	Nm	D	L1	L2	A1	A2
DU.000.40	VDI-40	AXIAL	ER-32	5000	1:1 >	55	Ø 40	103			
DU.021.40	VDI-40	ADJ ANGLE	ER-25	5000	1:1 <	14	Ø 40	79	169		
DU.030.40	VDI-40	SAW-MILL	Upon request	3000	1:1 <	55	Ø 40	65	90	85	40
DU.010.40	VDI-40	RADIAL	ER-32	5000	1:1 <	55	Ø 40	70	90	85	60
DU.011.40	VDI-40	RADIAL SET-BACK	ER-32	5000	1:1 >	55	Ø 40	85	125	40	105
DU.001.40	VDI-40	AXIAL OFFSET	ER-32	5000	1:1 >	55	Ø 40	107	74	50	33

Order Code	MODEL	Tool Style	Spindle	MAX RPM	GearRatio	Nm	D	L1	L2	A1	A2
DU.000.50	VDI-50	AXIAL	ER-40	4000	1:1 >	86	Ø 50	110			
DU.021.50	VDI-50	ADJ ANGLE	ER-32	4000	1:1 <	35	Ø 50	82	187		
DU.030.50	VDI-50	SAW-MILL	Upon request	2500	1:1 <	86	Ø 50	65	90	85	40
DU.010.50	VDI-50	RADIAL	ER-40	4000	1:1 <	86	Ø 50	68	110	99	65
DU.011.50	VDI-50	RADIAL SET-BACK	ER-40	4000	1:1 >	86	Ø 50	95	135	42	117
DU.001.50	VDI-50	AXIAL OFFSET	ER-40	4000	1:1 >	86	Ø 50	150	107	55	46

Order Code	MODEL	Tool Style	Spindle	MAX RPM	GearRatio	Nm	D	L1	L2	A1	A2
DU.000.60	VDI-60	AXIAL	ER-50	3000	1:1 >	176	Ø 60	140			
DU.021.60	VDI-60	ADJ ANGLE	ER-32	3000	1:1 <	35	Ø 60	85	190		
DU.030.60	VDI-60	SAW-MILL	Upon request	2000	1:1 <	176	Ø 60	90	132	85	55
DU.010.60	VDI-60	RADIAL	ER-50	3000	1:1 <	176	Ø 60	83	135	123	80
DU.011.60	VDI-60	RADIAL SET-BACK	ER-50	3000	1:1 >	176	Ø 60	120	173	42	163
DU.001.60	VDI-60	AXIAL OFFSET	ER-50	3000	1:1 >	176	Ø 60	165	115	70	50

OTHER MODELS PLEASE ASK

© MADAULA S.A. SUBJECT TO CHANGE WITHOUT NOTICE

**OPTION CODE**

- > CW INPUT = CW OUTPUT
- < CW INPUT = CCW OUTPUT

**FOR MORE INFORMATION ASK FOR SPECIFIC LITERATURE**

**ALSO AVAILABLE:**

- SPEED INCREASING
- SPEED REDUCTION
- RADIAL TOOL REVERSES FOR SUB-SPINDLE





# SAUTER-VDI (DIN-5480)

VDI-30, VDI-40, VDI-50, VDI-60

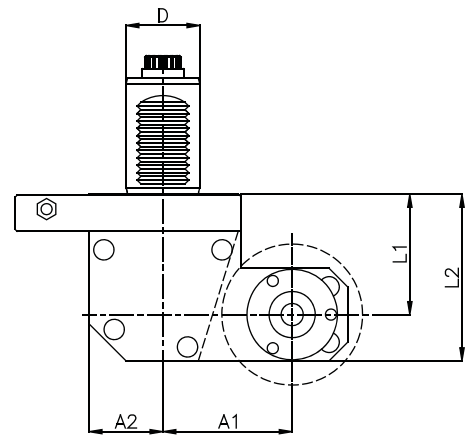
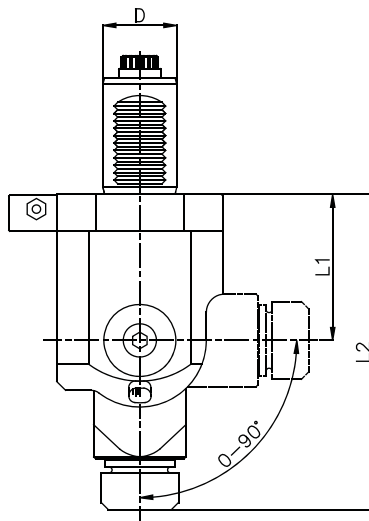
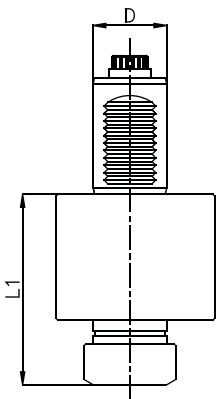
LICENSED BY SAUTER



P.000 AXIAL  
P.005 AXIAL INTERNAL COOLANT

P.021 RADIAL ADJUSTABLE

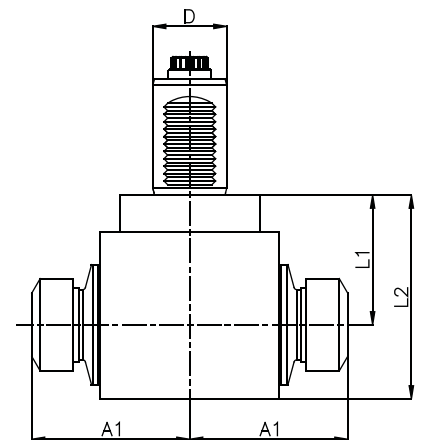
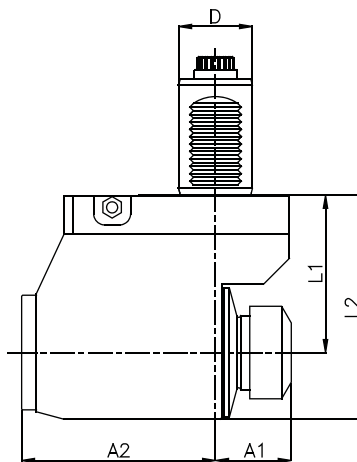
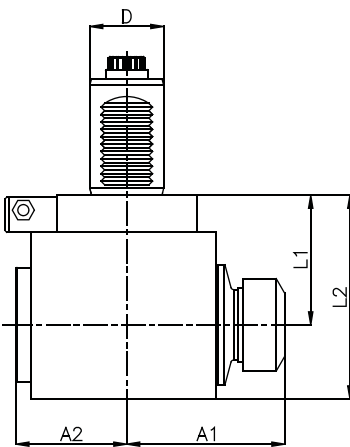
P.030 SAW-MILL



P.010 RADIAL  
P.016 RADIAL INTERNAL COOLANT

P.011 RADIAL SET-BACK  
P.017 RADIAL SET-BACK INTERNAL COOLANT

P.008 RADIAL DOUBLE OUTPUT



# SAUTER-VDI (DIN-5480)

VDI-30, VDI-40, VDI-50, VDI-60

LICENSED BY SAUTER



Order Code	MODEL	Tool Style	Spindle	MAX RPM	GearRatio	Nm	D	L1	L2	A1	A2
SA.000.3080	VDI-30	AXIAL	ER-25	6000	1:1 >	32	Ø 30	105			
SA.021.3080	VDI-30	ADJ ANGLE	ER-16	6000	1:1 <	7	Ø 30	65	143		
SA.030.3080	VDI-30	SAW-MILL	Upon request	3000	1:1 <	32	Ø 30	65	90	50	40
SA.010.3080	VDI-30	RADIAL	ER-25	6000	1:1 <	32	Ø 30	58	90	75	50
SA.011.3080	VDI-30	RADIAL SET-BACK	ER-25	6000	1:1 >	32	Ø 30	70	109	45	71
SA.008.3080	VDI-30	FACE/SUB-SPINDLE	ER-20/ER-20	6000	1:1 >	32	Ø 30	58	90	75	

Order Code	MODEL	Tool Style	Spindle	MAX RPM	GearRatio	Nm	D	L1	L2	A1	A2
SA.000.4080	VDI-40	AXIAL	ER-32	5000	1:1 >	55	Ø 40	103			
SA.021.4080	VDI-40	ADJ ANGLE	ER-25	5000	1:1 <	14	Ø 40	79	169		
SA.030.4080	VDI-40	SAW-MILL	Upon request	3000	1:1 <	55	Ø 40	65	90	85	40
SA.010.4080	VDI-40	RADIAL	ER-32	5000	1:1 <	55	Ø 40	60	95	85	58
SA.011.4080	VDI-40	RADIAL SET-BACK	ER-32	5000	1:1 >	55	Ø 40	85	125	40	105
SA.008.4080	VDI-40	FACE/SUB-SPINDLE	ER-25/ER-25	5000	1:1 >	55	Ø 40	60	95	85	

Order Code	MODEL	Tool Style	Spindle	MAX RPM	GearRatio	Nm	D	L1	L2	A1	A2
SA.000.5080	VDI-50	AXIAL	ER-40	4000	1:1 >	86	Ø 50	110			
SA.021.5080	VDI-50	ADJ ANGLE	ER-32	4000	1:1 <	35	Ø 50	82	187		
SA.030.5080	VDI-50	SAW-MILL	Upon request	2500	1:1 <	86	Ø 50	65	90	85	40
SA.010.5080	VDI-50	RADIAL	ER-40	4000	1:1 <	86	Ø 50	68	110	99	65
SA.011.5080	VDI-50	RADIAL SET-BACK	ER-40	4000	1:1 >	86	Ø 50	95	135	42	117
SA.008.5080	VDI-50	FACE/SUB-SPINDLE	ER-32/ER-32	4000	1:1 >	86	Ø 50	68	110	99	

Order Code	MODEL	Tool Style	Spindle	MAX RPM	GearRatio	Nm	D	L1	L2	A1	A2
SA.000.6080	VDI-60	AXIAL	ER-50	3000	1:1 >	176	Ø 60	140			
SA.021.6080	VDI-60	ADJ ANGLE	ER-32	3000	1:1 <	35	Ø 60	85	190		
SA.030.6080	VDI-60	SAW-MILL	Upon request	2000	1:1 <	176	Ø 60	90	132	85	55
SA.010.6080	VDI-60	RADIAL	ER-50	3000	1:1 <	176	Ø 60	83	135	123	80
SA.011.6080	VDI-60	RADIAL SET-BACK	ER-50	3000	1:1 >	176	Ø 60	120	173	42	163
SA.008.6080	VDI-60	FACE/SUB-SPINDLE	ER-40/ER-40	3000	1:1 >	176	Ø 60	83	135	123	

OTHER MODELS PLEASE ASK © MADAULA S.A. SUBJECT TO CHANGE WITHOUT NOTICE

**OPTION CODE**

- ▶ CW INPUT = CW OUTPUT
- ◀ CW INPUT = CCW OUTPUT

**ALSO AVAILABLE:**

- SPEED INCREASING
- SPEED REDUCTION
- RADIAL TOOL REVERSES FOR SUB-SPINDLE



# SAUTER-VDI (DIN-5482)

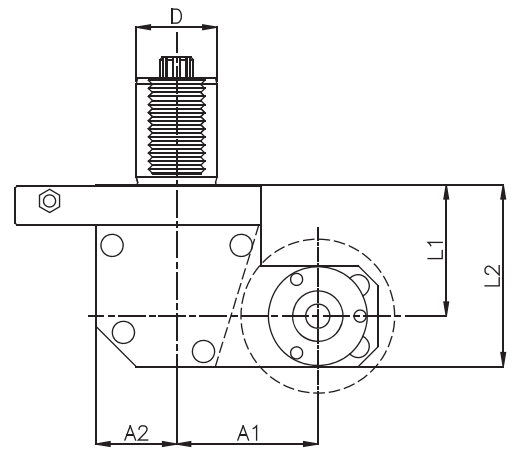
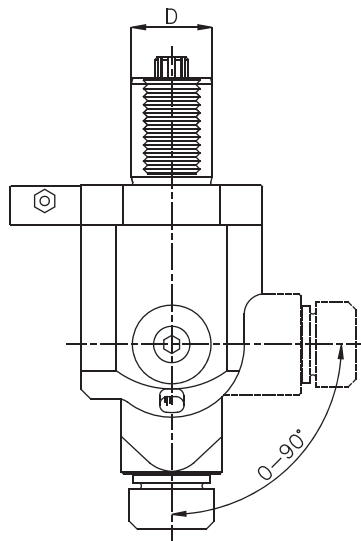
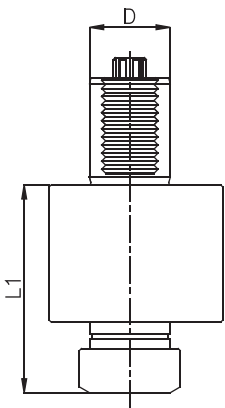
VDI-30, VDI-40, VDI-50, VDI-60



P.000 AXIAL  
P.005 AXIAL INTERNAL COOLANT

P.021 RADIAL ADJUSTABLE

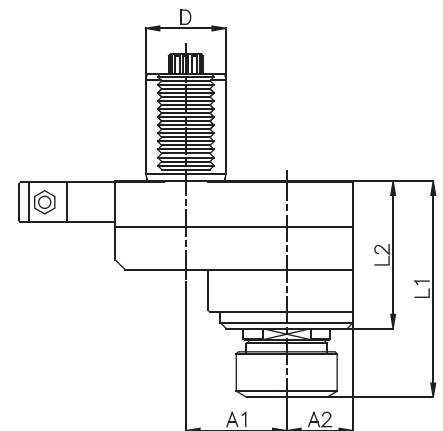
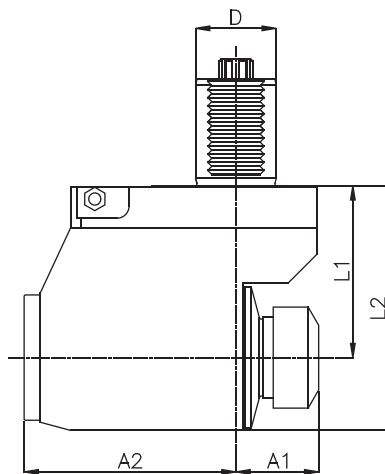
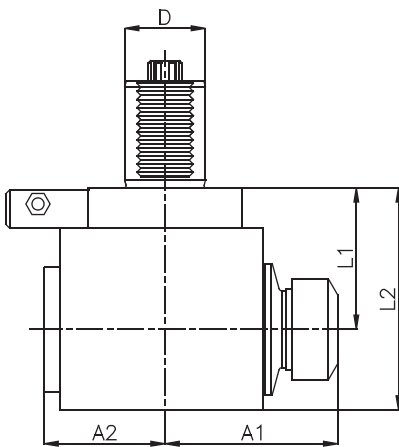
P.030 SAW-MILL



P.010 RADIAL  
P.016 RADIAL INTERNAL COOLANT

P.011 RADIAL SET-BACK  
P.017 RADIAL SET-BACK INTERNAL COOLANT

P.001 AXIAL OFFSET  
P.006 AXIAL OFFSET INTERNAL COOLANT



# SAUTER-VDI (DIN-5482)

VDI-30, VDI-40, VDI-50, VDI-60



Order Code	MODEL	Tool Style	Spindle	MAX RPM	GearRatio	Nm	D	L1	L2	A1	A2
SA.000.3082	VDI-30	AXIAL	ER-25	6000	1:1 >	32	Ø 30	105			
SA.021.3082	VDI-30	ADJ ANGLE	ER-16	6000	1:1 <	7	Ø 30	65	143		
SA.030.3082	VDI-30	SAW-MILL	Upon request	3000	1:1 <	32	Ø 30	65	90	50	40
SA.010.3082	VDI-30	RADIAL	ER-25	6000	1:1 <	32	Ø 30	58	90	75	50
SA.011.3082	VDI-30	RADIAL SET-BACK	ER-25	6000	1:1 >	32	Ø 30	70	109	45	71
SA.001.3082	VDI-30	AXIAL OFFSET	ER-25	6000	1:1 >	32	Ø 30	100	68	65	30

Order Code	MODEL	Tool Style	Spindle	MAX RPM	GearRatio	Nm	D	L1	L2	A1	A2
SA.000.4082	VDI-40	AXIAL	ER-32	5000	1:1 >	55	Ø 40	103			
SA.021.4082	VDI-40	ADJ ANGLE	ER-25	5000	1:1 <	14	Ø 40	79	169		
SA.030.4082	VDI-40	SAW-MILL	Upon request	3000	1:1 <	55	Ø 40	65	90	85	40
SA.010.4082	VDI-40	RADIAL	ER-32	5000	1:1 <	55	Ø 40	60	95	85	58
SA.011.4082	VDI-40	RADIAL SET-BACK	ER-32	5000	1:1 >	55	Ø 40	85	125	40	105
SA.001.4082	VDI-40	AXIAL OFFSET	ER-32	5000	1:1 >	55	Ø 40	107	74	50	33

Order Code	MODEL	Tool Style	Spindle	MAX RPM	GearRatio	Nm	D	L1	L2	A1	A2
SA.000.5082	VDI-50	AXIAL	ER-40	4000	1:1 >	86	Ø 50	110			
SA.021.5082	VDI-50	ADJ ANGLE	ER-32	4000	1:1 <	35	Ø 50	82	187		
SA.030.5082	VDI-50	SAW-MILL	Upon request	2500	1:1 <	86	Ø 50	65	90	85	40
SA.010.5082	VDI-50	RADIAL	ER-40	4000	1:1 <	86	Ø 50	68	110	99	65
SA.011.5082	VDI-50	RADIAL SET-BACK	ER-40	4000	1:1 >	86	Ø 50	95	135	42	117
SA.001.5082	VDI-50	AXIAL OFFSET	ER-40	4000	1:1 >	86	Ø 50	150	107	55	46

Order Code	MODEL	Tool Style	Spindle	MAX RPM	GearRatio	Nm	D	L1	L2	A1	A2
SA.000.6082	VDI-60	AXIAL	ER-50	3000	1:1 >	176	Ø 60	140			
SA.021.6082	VDI-60	ADJ ANGLE	ER-32	3000	1:1 <	35	Ø 60	85	190		
SA.030.6082	VDI-60	SAW-MILL	Upon request	2000	1:1 <	176	Ø 60	90	132	85	55
SA.010.6082	VDI-60	RADIAL	ER-50	3000	1:1 <	176	Ø 60	83	135	123	80
SA.011.6082	VDI-60	RADIAL SET-BACK	ER-50	3000	1:1 >	176	Ø 60	120	173	42	163
SA.001.6082	VDI-60	AXIAL OFFSET	ER-50	3000	1:1 >	176	Ø 60	165	115	70	50

OTHER MODELS PLEASE ASK

© MADAULA S.A. SUBJECT TO CHANGE WITHOUT NOTICE

**OPTION CODE**

- > CW INPUT = CW OUTPUT
- < CW INPUT = CCW OUTPUT

FOR MORE INFORMATION ASK FOR SPECIFIC LITERATURE



ALSO AVAILABLE:

 SPEED INCREASING  
 SPEED REDUCTION

RADIAL TOOL REVERSES FOR SUB-SPINDLE



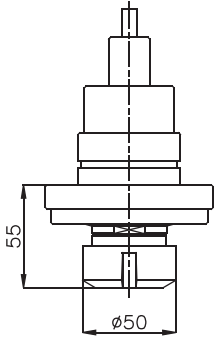
# BIGLIA

BIGLIA B501Y, B301, B56, B470, B550  
EUROTECH 830 SLY, 730 SLY, E42 SL



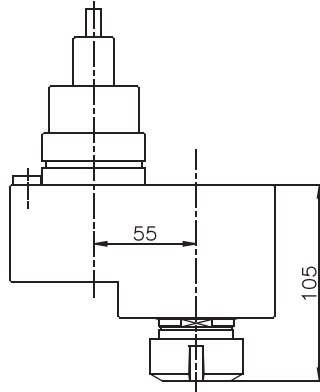
P.000 AXIAL

P.005 AXIAL INTERNAL COOLANT

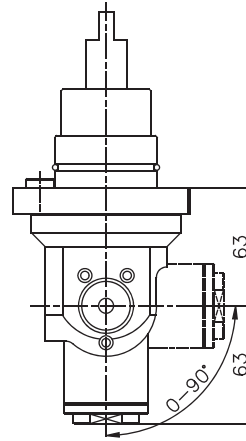


P.001 AXIAL OFFSET

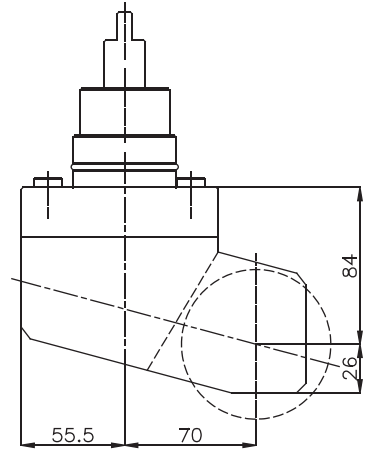
P.006 AXIAL OFFSET INTERNAL COOLANT



P.021 RADIAL ADJUSTABLE

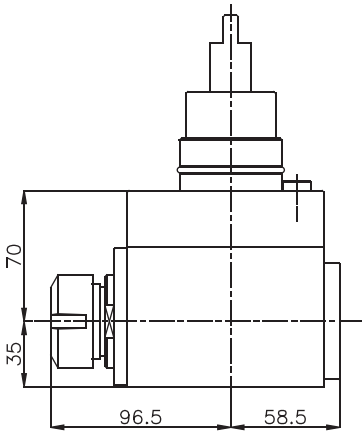


P.030 SAW-MILL



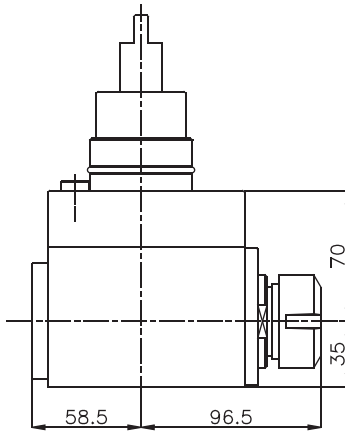
P.010 RADIAL

P.016 RADIAL INTERNAL COOLANT

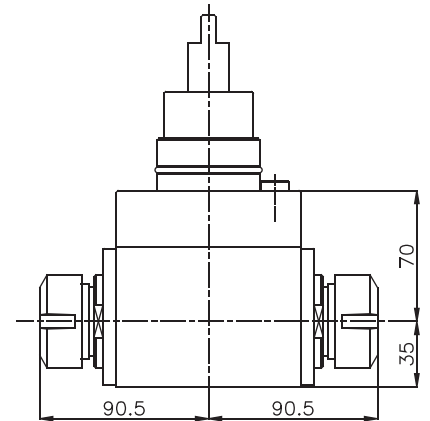


P.011 RADIAL SET-BACK

P.017 RADIAL SET-BACK INTERNAL COOLANT



P.008 RADIAL DOUBLE OUTPUT



Order Code	MODEL	Tool Style	Spindle	MAX RPM	GearRatio	Nm
BG.000.730SLY	830 SLY, 730 SLY, E42 SL	AXIAL	ER-32	4000	1:1 >	55
BG.001.730SLY	830 SLY, 730 SLY, E42 SL	AXIAL OFFSET	ER-25	4000	1:1 >	32
BG.021.730SLY	830 SLY, 730 SLY, E42 SL	ADJ ANGLE	ER-16	4000	1:1 <	7
BG.030.730SLY	830 SLY, 730 SLY, E42 SL	SAW-MILL	Upon request	3000	1:1 <	55
BG.010.730SLY	830 SLY, 730 SLY, E42 SL	RADIAL	ER-32	4000	1:1 <	55
BG.033.730SLY	830 SLY, 730 SLY, E42 SL	RADIAL SUBSPINDLE	ER-32	4000	1:1 <	55
BG.008.730SLY	830 SLY, 730 SLY, E42 SL	FACE/SUB-SPINDLE	ER-25/ER-25	4000	1:1 <<	32

OTHER MODELS PLEASE ASK © MADAULA SA. SUBJECT TO CHANGE WITHOUT NOTICE

**OPTION CODE**

- CW INPUT = CW OUTPUT
- CW INPUT = CCW OUTPUT

**ALSO AVAILABLE:**

- SPEED INCREASING
- SPEED REDUCTION
- RADIAL TOOL REVERSES FOR SUB-SPINDLE

FOR MORE INFORMATION ASK FOR SPECIFIC LITERATURE

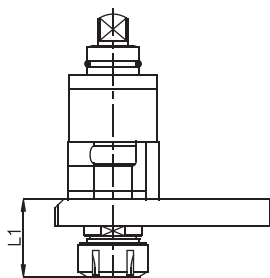




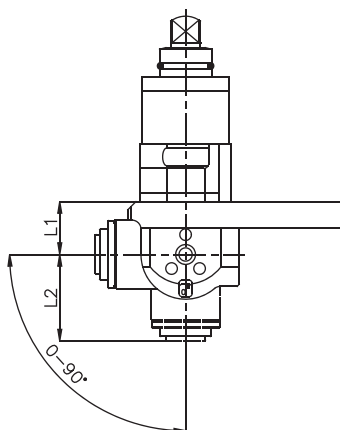
# CMZ

TL-15M, TB-46M, TB-67M  
 TL-20M, TL-25M

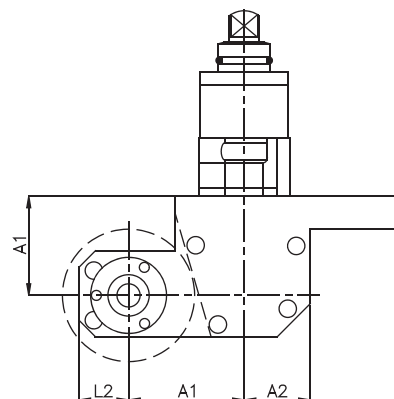
P.001 AXIAL OFFSET  
 P.006 AXIAL OFFSET INTERNAL COOLANT



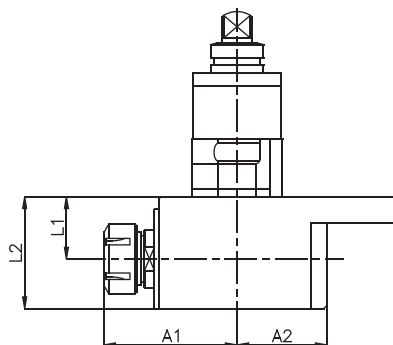
P.021 RADIAL ADJUSTABLE



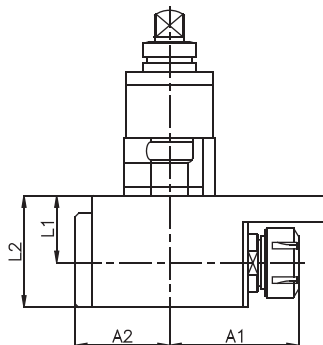
P.030 SAW-MILL



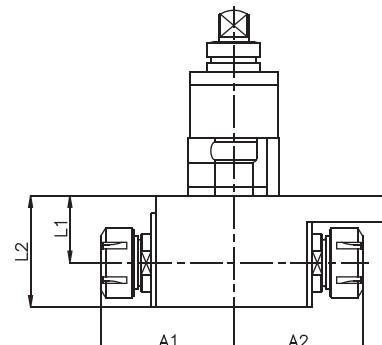
P.010 RADIAL  
 P.016 RADIAL INTERNAL COOLANT



P.033 RADIAL SUBSPINDLE



P.008 RADIAL DOUBLE OUTPUT



Order Code	MODEL	Tool Style	Spindle	MAX RPM	GearRatio	Nm	L1	L2	A1	A2
MZ.000.15M	TL 15M, TB 46M, TB 67M	AXIAL	ER-25	6000	1:1 >	32	47			
MZ.021.15M	TL 15M, TB 46M, TB 67M	ADJ ANGLE	ER-16	6000	1:1 <	7	32	52		
MZ.030.15M	TL 15M, TB 46M, TB 67M	SAW-MILL	Upon request	3000	1:1 <	32	60	30	70	40
MZ.010.15M	TL 15M, TB 46M, TB 67M	RADIAL	ER-25	6000	1:1 <	32	37.5	68	83	55
MZ.033.15M	TL 15M, TB 46M, TB 67M	RADIAL SUBSPINDLE	ER-25	6000	1:1 <>	32	37.5	68	84	55
MZ.008.15M	TL 15M, TB 46M, TB 67M	FACE/SUB-SPINDLE	ER-20/ER-20	6000	1:1 >	32	37.5	68	80	80
MZ.000.20M	TL 20M/25M	AXIAL	ER-32	4000	1:1 <	55	61			
MZ.021.20M	TL 20M/25M	ADJ ANGLE	ER-16	4000	1:1 <	7	85	63		
MZ.030.20M	TL 20M/25M	SAW-MILL	Upon request	3000	1:1 <	55	75	30	70	40
MZ.010.20M	TL 20M/25M	RADIAL	ER-32	4000	1:1 >	55	55	94	81	60
MZ.033.20M	TL 20M/25M	RADIAL SUBSPINDLE	ER-32	4000	1:1 <	55	55	94	60	81
MZ.008.20M	TL 20M/25M	FACE/SUB-SPINDLE	ER-25/ER-25	4000	1:1 <<	32	55	90	88	88

OTHER MODELS PLEASE ASK

© MADAULA SA. SUBJECT TO CHANGE WITHOUT NOTICE

**OPTION CODE**

- CW INPUT = CW OUTPUT
- CW INPUT = CCW OUTPUT

**ALSO AVAILABLE:**

- SPEED INCREASING
- SPEED REDUCTION
- RADIAL TOOL REVERSES FOR SUB-SPINDLE

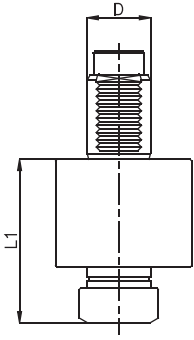


# CMZ

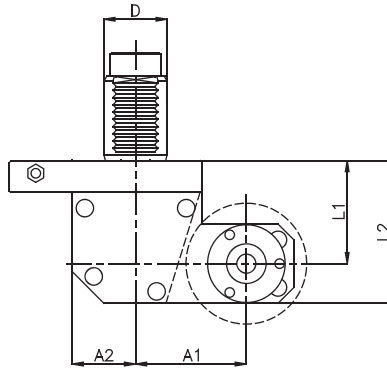
TL-15M, TB-46M, TB-67M  
TL-20M, TL-25M



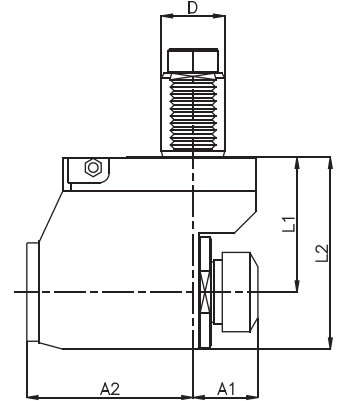
P.000 AXIAL  
P.005 AXIAL INTERNAL COOLANT



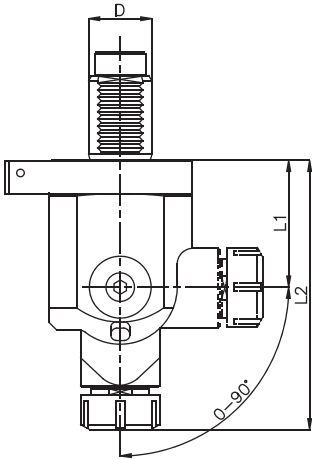
P.030 SAW-MILL



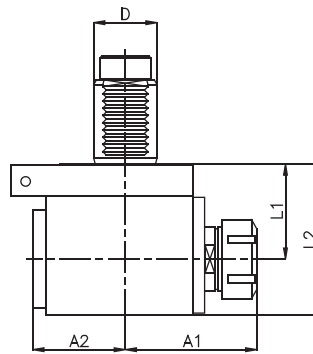
P.011 RADIAL SET-BACK  
P.017 RADIAL SET-BACK INTERNAL COOLANT



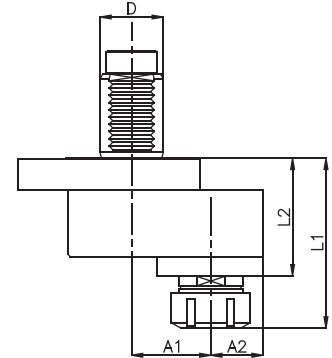
P.021 RADIAL ADJUSTABLE



P.010 RADIAL  
P.016 RADIAL INTERNAL COOLANT



P.001 AXIAL OFFSET  
P.006 AXIAL OFFSET INTERNAL COOLANT



Order Code	MODEL	Tool Style	Spindle	MAX RPM	GearRatio	Nm	L1	L2	A1	A2
MZ.000.30	TL 15M, TB 46M, TB 67M	AXIAL	ER-25	6000	1:1 >	32	105			
MZ.021.30	TL 15M, TB 46M, TB 67M	ADJ ANGLE	ER-16	6000	1:1 <	7	65	143		
MZ.030.30	TL 15M, TB 46M, TB 67M	SAW-MILL	Upon request	3000	1:1 <	32	65	90	50	40
MZ.010.30	TL 15M, TB 46M, TB 67M	RADIAL	ER-25	6000	1:1 <	32	58	90	75	50
MZ.011.30	TL 15M, TB 46M, TB 67M	RADIAL SET-BACK	ER-25	6000	1:1 >	32	70	109	34	83
MZ.001.30	TL 15M, TB 46M, TB 67M	AXIAL OFFSET	ER-25	6000	1:1 >	32	100	68	65	30
MZ.000.40	TL 20M/25M	AXIAL	ER-32	5000	1:1 <	55	103			
MZ.021.40	TL 20M/25M	ADJ ANGLE	ER-25	5000	1:1 <	14	79	169		
MZ.030.40	TL 20M/25M	SAW-MILL	Upon request	3000	1:1 <	55	65	90	70	40
MZ.010.40	TL 20M/25M	RADIAL	ER-32	5000	1:1 >	55	60	95	85	58
MZ.011.40	TL 20M/25M	RADIAL SET-BACK	ER-32	5000	1:1 <	55	85	125	40	105
MZ.001.40	TL 20M/25M	AXIAL OFFSET	ER-32	5000	1:1 >	55	107	74	50	33

OTHER MODELS PLEASE ASK

© MADAULA SA. SUBJECT TO CHANGE WITHOUT NOTICE



**OPTION CODE**

- > CW INPUT = CW OUTPUT
- < CW INPUT = CCW OUTPUT

**ALSO AVAILABLE:**

- SPEED INCREASING
- SPEED REDUCTION
- RADIAL TOOL REVERSES FOR SUB-SPINDLE

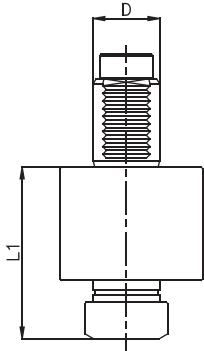


# CMZ

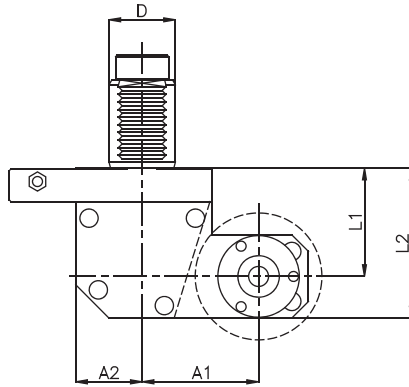
## TBI-520



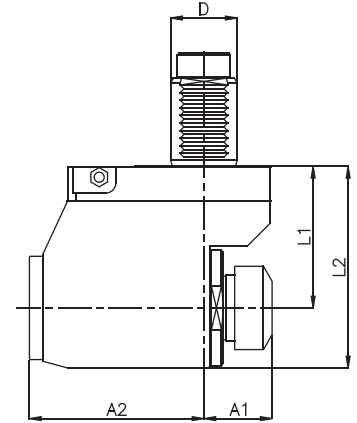
P.000 AXIAL  
P.005 AXIAL INTERNAL COOLANT



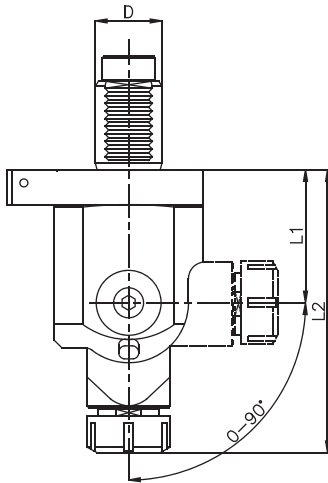
P.030 SAW-MILL



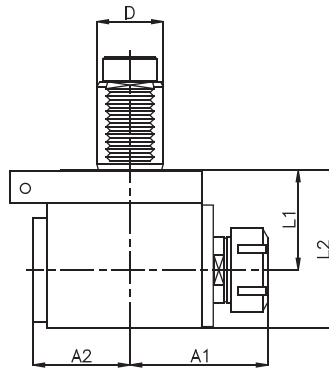
P.011 RADIAL SET-BACK  
P.017 RADIAL SET-BACK INTERNAL COOLANT



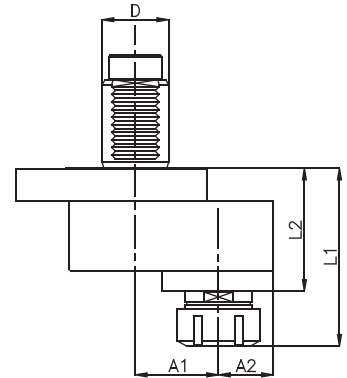
P.021 RADIAL ADJUSTABLE



P.010 RADIAL  
P.016 RADIAL INTERNAL COOLANT



P.001 AXIAL OFFSET  
P.006 AXIAL OFFSET INTERNAL COOLANT



Order Code	MODEL	Tool Style	Spindle	MAX RPM	GearRatio	Nm	D	L1	L2	A1	A2
MZ.000.50	VDI-50	AXIAL	ER-40	4000	1:1 >	86	Ø 50	110			
MZ.021.50	VDI-50	ADJ ANGLE	ER-32	4000	1:1 <	35	Ø 50	82	187		
MZ.030.50	VDI-50	SAW-MILL	Upon request	2500	1:1 <	86	Ø 50	65	90	85	40
MZ.010.50	VDI-50	RADIAL	ER-40	4000	1:1 <	86	Ø 50	68	110	99	70
MZ.011.50	VDI-50	RADIAL SET-BACK	ER-40	4000	1:1 >	86	Ø 50	95	135	42	117
MZ.001.50	VDI-50	AXIAL OFFSET	ER-40	4000	1:1 >	86	Ø 50	150	107	55	46

OTHER MODELS PLEASE ASK © MADAULA SA. SUBJECT TO CHANGE WITHOUT NOTICE

### OPTION CODE

- > CW INPUT = CW OUTPUT
- < CW INPUT = CCW OUTPUT

ALSO AVAILABLE:  
SPEED INCREASING  
SPEED REDUCTION  
RADIAL TOOL REVERSES FOR SUB-SPINDLE

### FOR MORE INFORMATION ASK FOR SPECIFIC LITERATURE

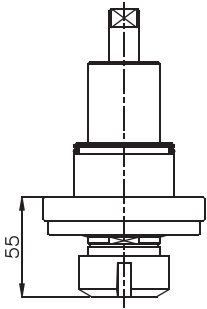


# DOOSAN INFRACORE

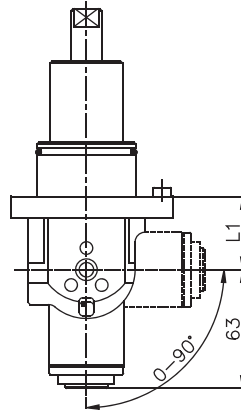
PUMA 230MS, PUMA 300MS,  
PUMA 240, PUMA 2500LY  
PUMA 2500SY, PUMA MX2000/2500



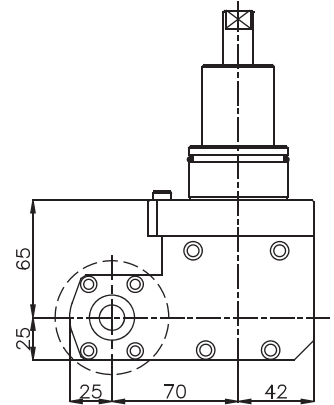
P.000 AXIAL  
P.005 AXIAL INTERNAL COOLANT



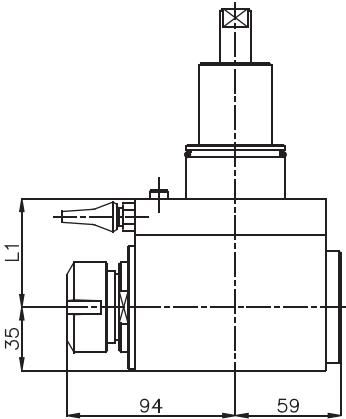
P.021 RADIAL ADJUSTABLE



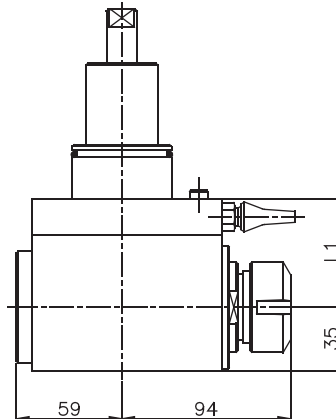
P.030 SAW-MILL



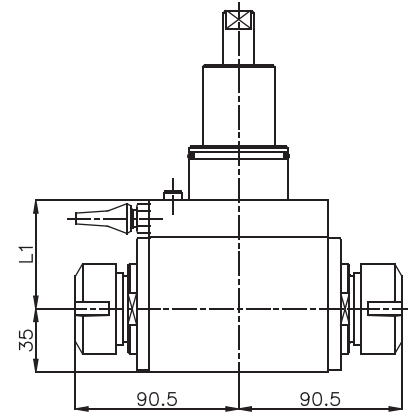
P.010 RADIAL  
P.016 RADIAL INTERNAL COOLANT



P.011 RADIAL SET-BACK  
P.017 RADIAL SET-BACK INTERNAL COOLANT



P.008 RADIAL DOUBLE OUTPUT



Order Code	MODEL	Tool Style	Spindle	MAX RPM	Ratio	Nm	L1
DN.000.230M	PUMA-230M	AXIAL	ER-32	4000	1:1 >	55	
DN.021.230M	PUMA-230M	ADJ ANGLE	ER-16	4000	1:1 <	7	40,5
DN.030.230M	PUMA-230M	SAW-MILL	Upon request	3000	1:1 <	55	65
DN.010.230M	PUMA-230M	RADIAL	ER-32	4000	1:1 <	55	60
DN.033.230M	PUMA-230M	RADIAL SUBSPINDLE	ER-32	4000	1:1 <	55	60
DN.008.230M	PUMA-230M	FACE/SUB-SPINDLE	ER-25/ER-25	4000	1:1 ><	32	60
DN.000.300M	PUMA-300M	AXIAL	ER-32	4000	1:1 >	55	
DN.021.300M	PUMA-300M	ADJ ANGLE	ER-25	4000	1:1 <	14	63
DN.030.300M	PUMA-300M	SAW-MILL	Upon request	3000	1:1 <	55	72
DN.010.300M	PUMA-300M	RADIAL	ER-32	4000	1:1 <	55	72
DN.033.300M	PUMA-300M	RADIAL SUBSPINDLE	ER-32	4000	1:1 <	55	72
DN.008.300M	PUMA-300M	FACE/SUB-SPINDLE	ER-25/ER-25	4000	1:1 ><	32	72

OTHER MODELS PLEASE ASK

© MADAULA SA. SUBJECT TO CHANGE WITHOUT NOTICE



**OPTION CODE**

- CW INPUT = CW OUTPUT
- CW INPUT = CCW OUTPUT

**ALSO AVAILABLE:**

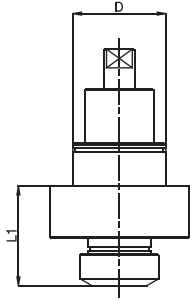
- SPEED INCREASING
- SPEED REDUCTION
- RADIAL TOOL REVERSES FOR SUB-SPINDLE

# DOOSAN INFRACORE

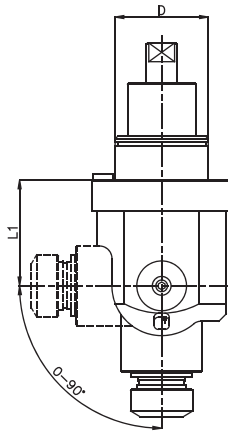
PUMA 400LM / 400LMB  
PUMA 600 / 700 / 800



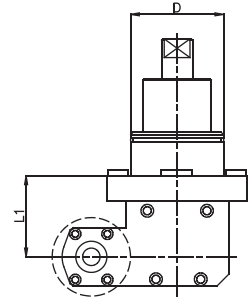
P.000 AXIAL  
P.005 AXIAL INTERNAL COOLANT



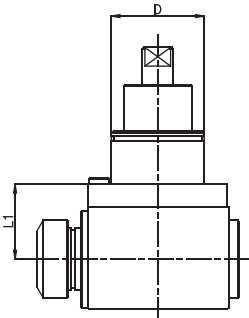
P.021 RADIAL ADJUSTABLE



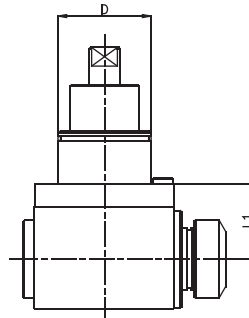
P.030 SAW-MILL



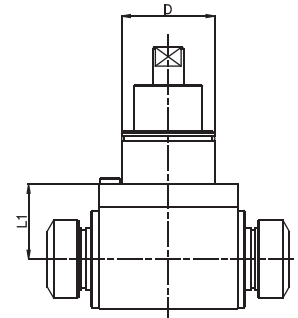
P.010 RADIAL  
P.016 RADIAL INTERNAL COOLANT



P.011 RADIAL SET-BACK  
P.017 RADIAL SET-BACK INTERNAL COOLANT



P.008 RADIAL DOUBLE OUTPUT



Order Code	MODEL	Tool Style	Spindle	MAX RPM	Ratio	Nm	D	L1
DN.000.400	PUMA 400LM / 400LMB	AXIAL	ER-40	4000	1:1 >	86	Ø 75	80
DN.021.400	PUMA 400LM / 400LMB	ADJ ANGLE	ER-32	4000	1:1 <	35	Ø 75	85
DN.030.400	PUMA 400LM / 400LMB	SAW-MILL	Upon request	3000	1:1 <	86	Ø 75	65
DN.010.400	PUMA 400LM / 400LMB	RADIAL	ER-40	4000	1:1 <	86	Ø 75	60
DN.033.400	PUMA 400LM / 400LMB	RADIAL SUBSPINDLE	ER-40	4000	1:1 <	86	Ø 75	60
DN.008.400	PUMA 400LM / 400LMB	FACE/SUB-SPINDLE	ER-40/ER-40	4000	1:1 <>	86	Ø 75	60
DN.000.600	PUMA 600 / 700 / 800	AXIAL	ER-50	4000	1:1 >	176	Ø 85	100
DN.021.600	PUMA 600 / 700 / 800	ADJ ANGLE	ER-40	4000	1:1 <	61	Ø 85	85
DN.030.600	PUMA 600 / 700 / 800	SAW-MILL	Upon request	3000	1:1 <	176	Ø 85	65
DN.010.600	PUMA 600 / 700 / 800	RADIAL	ER-50	4000	1:1 <	176	Ø 85	60
DN.033.600	PUMA 600 / 700 / 800	RADIAL SUBSPINDLE	ER-50	4000	1:1 <	176	Ø 85	60
DN.008.600	PUMA 600 / 700 / 800	FACE/SUB-SPINDLE	ER-50/ER-50	4000	1:1 <>	176	Ø 85	60

OTHER MODELS PLEASE ASK © MADAULA SA. SUBJECT TO CHANGE WITHOUT NOTICE

**OPTION CODE**

- > CW INPUT = CW OUTPUT
- < CW INPUT = CCW OUTPUT

**ALSO AVAILABLE:**

- SPEED INCREASING
- SPEED REDUCTION
- RADIAL TOOL REVERSES FOR SUB-SPINDLE

**FOR MORE INFORMATION ASK FOR SPECIFIC LITERATURE**

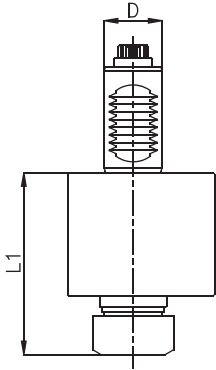


# EMCO

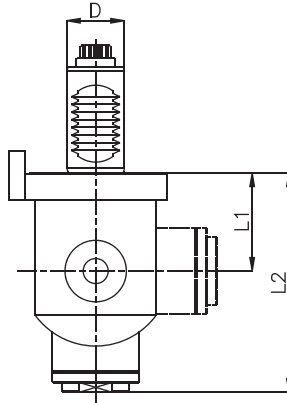
ET 332 MC, ET 365 MC, ET 425 TCM  
ET 465 MC PLUS/HYPERTURN 665  
E42, E45, E65



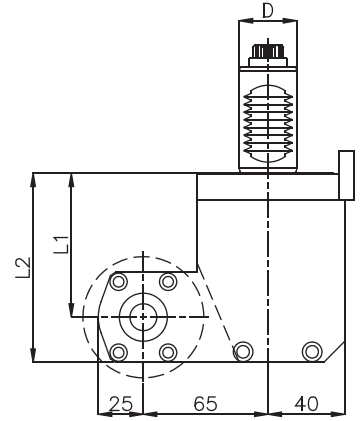
P.000 AXIAL  
P.005 AXIAL INTERNAL COOLANT



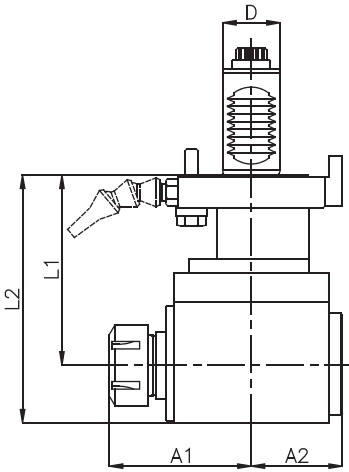
P.021 RADIAL ADJUSTABLE



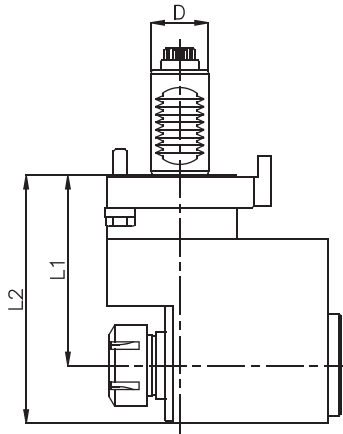
P.030 SAW-MILL



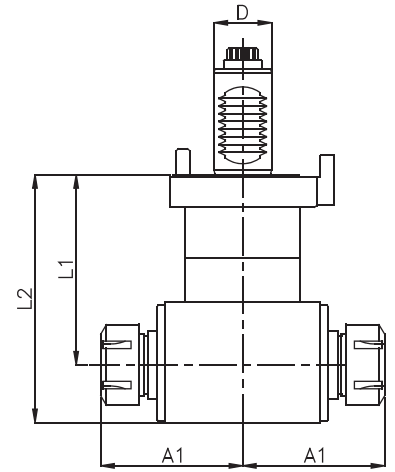
P.010 RADIAL  
P.016 RADIAL INTERNAL COOLANT



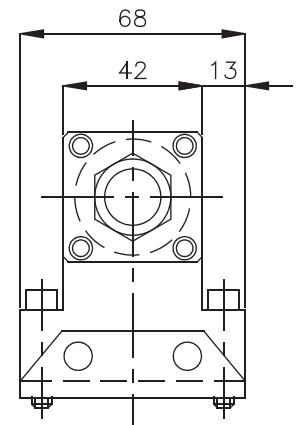
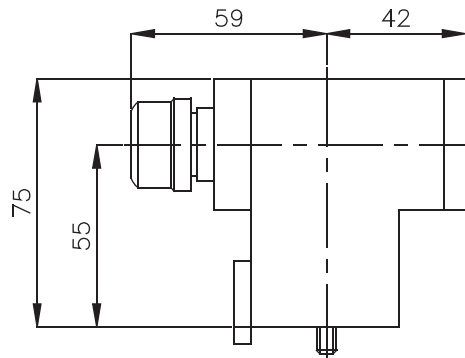
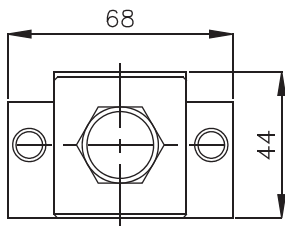
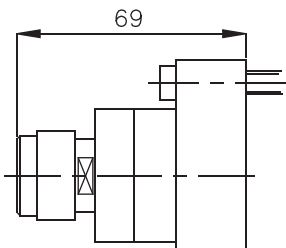
P.011 RADIAL SET-BACK  
P.017 RADIAL SET-BACK INTERNAL COOLANT



P.008 RADIAL DOUBLE OUTPUT



## ET 425 TCM



# EMCO

ET 332 MC, ET 365 MC, ET 425 TCM  
 ET 465 MC PLUS/HYPERTURN 665  
 E42, E45, E65



## ET 332 TCM USE VDI -25, SAUTER DRIVE DIN 5480 (see drawings page 16)

Order Code	MODEL	Tool Style	Spindle	MAX RPM	GearRatio	Nm	D	L1	L2	A1	A2
EM.000.332	ET-332MC	AXIAL	ER-25	6000	1:1 >	32	Ø 25	70			
EM.021.332	ET-332MC	ADJ ANGLE	ER-16	6000	1:1 <	7	Ø 25	51	114		
EM.030.332	ET-332MC	SAW-MILL	Upon request	3000	1:1 <	32	Ø 25	75	100		
EM.010.332	ET-332MC	RADIAL	ER-25	6000	1:1 <	32	Ø 25	75	105	72	47
EM.011.332	ET-332MC	RADIAL SET-BACK	ER-25	6000	1:1 >	32	Ø 25	75	105	37	84
EM.008.332	ET-332MC	FACE/SUB-SPINDLE	ER-20/ER-20	6000	1:1 > <	32	Ø 25	75	105	74	

## ET 345 TCM USE VDI -30, DUPLOMATIC DRIVE DIN 1809 (see drawings page 4)

Order Code	MODEL	Tool Style	Spindle	MAX RPM	GearRatio	Nm	D	L1	L2	A1	A2
EM.000.345	ET-345TMC	AXIAL	ER-25	6000	1:1 >	32	Ø 30	94			
EM.021.345	ET-345TMC	ADJ ANGLE	ER-16	6000	1:1 <	7	Ø 30	51	114		
EM.030.345	ET-345TMC	SAW-MILL	Upon request	3000	1:1 <	32	Ø 30	100	125		
EM.010.345	ET-345TMC	RADIAL	ER-25	6000	1:1 <	32	Ø 30	78	110	72	47
EM.011.345	ET-345TMC	RADIAL SET-BACK	ER-25	6000	1:1 >	32	Ø 30	78	110	40	74
EM.008.345	ET-345TMC	FACE/SUB-SPINDLE	ER-20/ER-20	6000	1:1 > <	32	Ø 30	100	110	74	

## ET 365 TCM USE VDI -30, SAUTER DRIVE DIN 5480 (see drawings page 16)

Order Code	MODEL	Tool Style	Spindle	MAX RPM	GearRatio	Nm	D	L1	L2	A1	A2
EM.000.365	ET-365MC	AXIAL	ER-25	6000	1:1 >	32	Ø 30	94			
EM.021.365	ET-365MC	ADJ ANGLE	ER-16	6000	1:1 <	7	Ø 30	51	114		
EM.030.365	ET-365MC	SAW-MILL	Upon request	3000	1:1 <	32	Ø 30	100	125		
EM.010.365	ET-365MC	RADIAL	ER-25	6000	1:1 <	32	Ø 30	100	130	72	47
EM.011.365	ET-365MC	RADIAL SET-BACK	ER-25	6000	1:1 >	32	Ø 30	100	130	37	84
EM.008.365	ET-365MC	FACE/SUB-SPINDLE	ER-20/ER-20	6000	1:1 > <	32	Ø 30	100	130	74	

## ET 465 TCM and HYPERTURN 665 USE VDI -30, SAUTER DRIVE DIN 5480 (see drawings page 16)

Order Code	MODEL	Tool Style	Spindle	MAX RPM	GearRatio	Nm	D	L1	L2	A1	A2
EM.000.465	ET-465MC	AXIAL	ER-25	6000	1:1 >	32	Ø 30	94			
EM.021.465	ET-465MC	ADJ ANGLE	ER-16	6000	1:1 <	7	Ø 30	51	114		
EM.030.465	ET-465MC	SAW-MILL	Upon request	3000	1:1 <	32	Ø 30	100	125		
EM.010.465	ET-465MC	RADIAL	ER-25	6000	1:1 <	32	Ø 30	100	130	72	47
EM.011.465	ET-465MC	RADIAL SET-BACK	ER-25	6000	1:1 >	32	Ø 30	100	130	37	84
EM.008.465	ET-465MC	FACE/SUB-SPINDLE	ER-20/ER-20	6000	1:1 > <	32	Ø 30	100	130	74	

OTHER MODELS PLEASE ASK

© MADAULA SA. SUBJECT TO CHANGE WITHOUT NOTICE

### OPTION CODE

- > CW INPUT = CW OUTPUT
- < CW INPUT = CCW OUTPUT

### ALSO AVAILABLE:

- SPEED INCREASING
- SPEED REDUCTION
- RADIAL TOOL REVERSES FOR SUB-SPINDLE

FOR MORE INFORMATION ASK FOR SPECIFIC LITERATURE

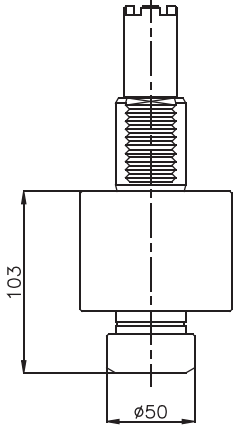




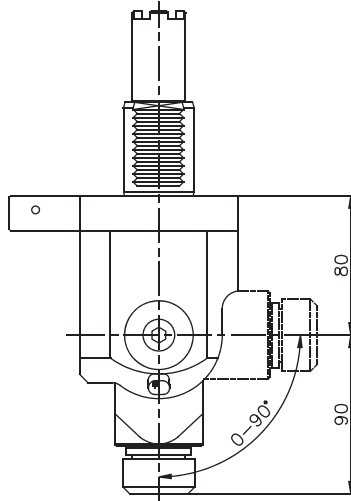
# HAAS

SL-20  
SL-30

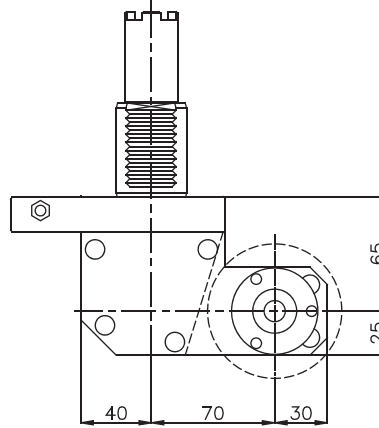
P.000 AXIAL  
P.005 AXIAL INTERNAL COOLANT



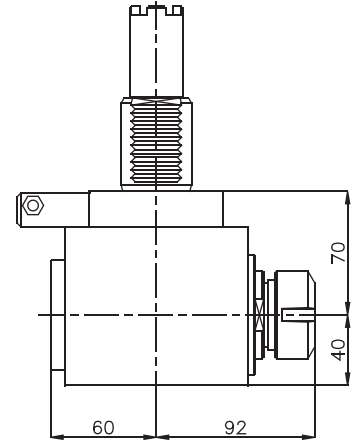
P.021 RADIAL ADJUSTABLE



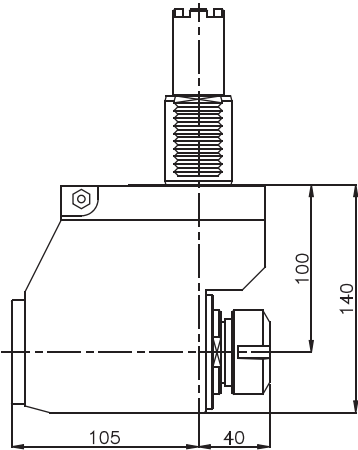
P.030 SAW-MILL



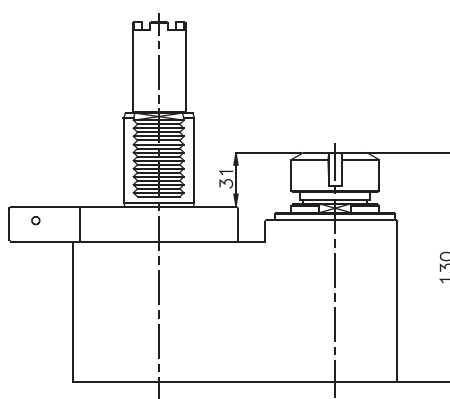
P.010 RADIAL  
P.016 RADIAL INTERNAL COOLANT



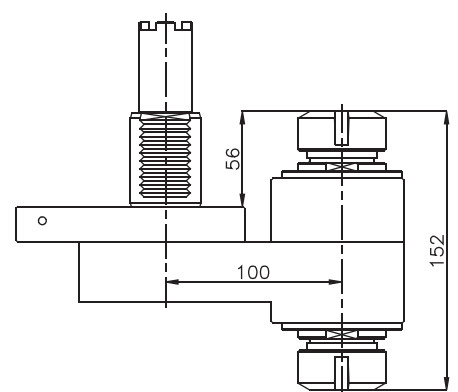
P.011 RADIAL SET-BACK  
P.017 RADIAL SET-BACK INTERNAL COOLANT



P.033 RADIAL SUBSPINDLE



P.008 RADIAL DOUBLE OUTPUT



Order Code	MODEL	Tool Style	Spindle	MAX RPM	GearRatio	Nm
HS.000.SL20	SL-20, SL-30	AXIAL	ER-32	5000	1:1 >	55
HS.021.SL20	SL-20, SL-30	ADJ ANGLE	ER-25	5000	1:1 <	14
HS.030.SL20	SL-20, SL-30	SAW-MILL	Upon request	3000	1:1 <	55
HS.010.SL20	SL-20, SL-30	RADIAL	ER-32	5000	1:1 <	55
HS.011.SL20	SL-20, SL-30	RADIAL SET-BACK	ER-32	5000	1:1 <	55
HS.033.SL20	SL-20, SL-30	RADIAL SUBSPINDLE	ER-32	5000	1:1 >	55
HS.008.SL20	SL-20, SL-30	FACE/SUB-SPINDLE	ER-32/ER-32	5000	1:1 <<	55

OTHER MODELS PLEASE ASK © MADAULA SA. SUBJECT TO CHANGE WITHOUT NOTICE

FOR MORE INFORMATION ASK FOR SPECIFIC LITERATURE



**OPTION CODE**

- CW INPUT = CW OUTPUT
- CW INPUT = CCW OUTPUT

**ALSO AVAILABLE:**

- SPEED INCREASING
- SPEED REDUCTION
- RADIAL TOOL REVERSES FOR SUB-SPINDLE

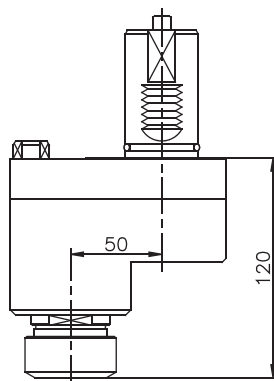


# MAZAK

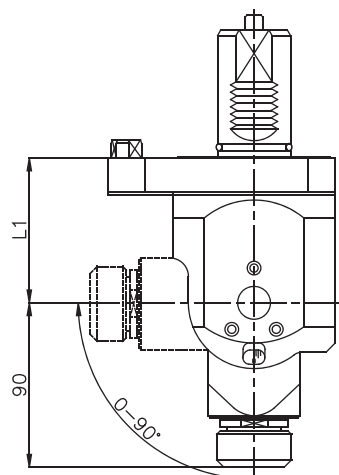
MULTIPLEX 610/6100  
MULTIPLEX 620/6200



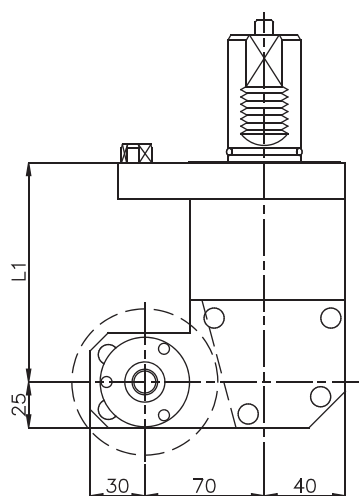
P.001 AXIAL OFFSET  
P.006 AXIAL OFFSET INTERNAL COOLANT



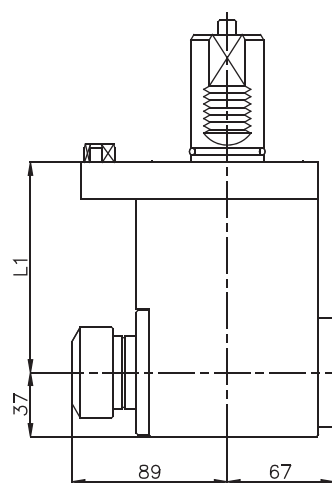
P.021 RADIAL ADJUSTABLE



P.030 SAW-MILL



P.010 RADIAL  
P.016 RADIAL INTERNAL COOLANT



Order Code	MODEL	Tool Style	Spindle	MAX RPM	GearRatio	Nm	L1
MK.001.6100	MULTIPLEX 610 / 6100	AXIAL OFFSET	ER-32	5000	1:1 >	55	
MK.021.6100	MULTIPLEX 610 / 6100	ADJ ANGLE	ER-25	5000	1:1 <	14	79
MK.030.6100	MULTIPLEX 610 / 6100	SAW-MILL	Upon request	3500	1:1 <	55	115
MK.010.6100	MULTIPLEX 610 / 6100	RADIAL	ER-32	5000	1:1 <	55	115
MK.001.6200	MULTIPLEX 620 / 6200	AXIAL OFFSET	ER-32	5000	1:1 >	55	
MK.021.6200	MULTIPLEX 620 / 6200	ADJ ANGLE	ER-25	5000	1:1 <	14	79
MK.030.6200	MULTIPLEX 620 / 6200	SAW-MILL	Upon request	3500	1:1 <	55	130
MK.010.6200	MULTIPLEX 620 / 6200	RADIAL	ER-32	5000	1:1 <	55	130

OTHER MODELS PLEASE ASK © MADAULA SA. SUBJECT TO CHANGE WITHOUT NOTICE

**OPTION CODE**

- > CW INPUT = CW OUTPUT
- < CW INPUT = CCW OUTPUT

**ALSO AVAILABLE:**

- SPEED INCREASING
- SPEED REDUCTION
- RADIAL TOOL REVERSES FOR SUB-SPINDLE

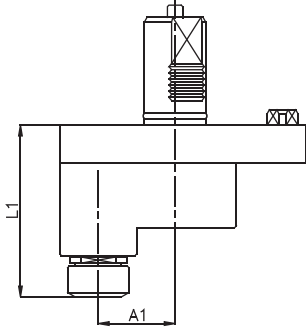


# MAZAK

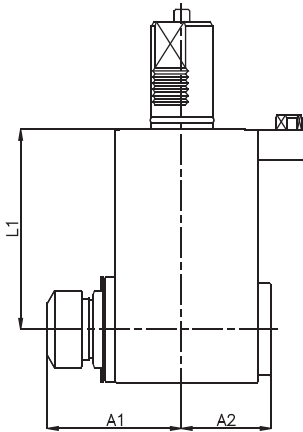


SQT-100M(S) / 10M(S)  
SQT-200M(S) / 250M(S) / 15M(S) / 18M(S)  
NEXUS 100M / 150M / 200M / 250M

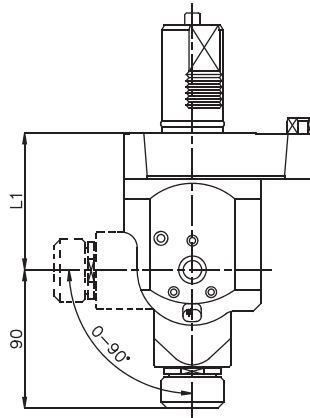
P.001 AXIAL OFFSET  
P.006 AXIAL OFFSET INTERNAL COOLANT



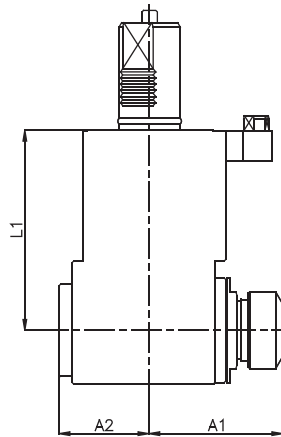
P.010 RADIAL  
P.016 RADIAL INTERNAL COOLANT



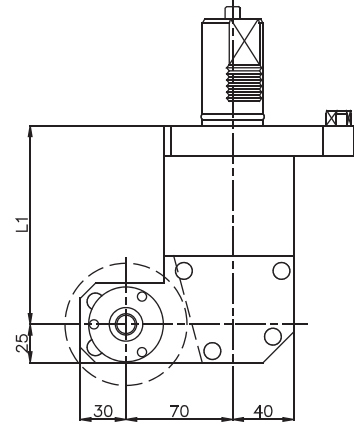
P.021 RADIAL ADJUSTABLE



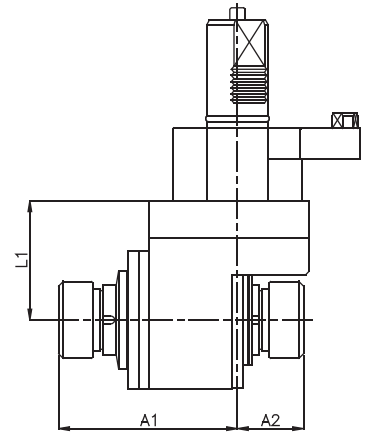
P.033 RADIAL SUBSPINDLE



P.030 SAW-MILL



P.008 RADIAL DOUBLE OUTPUT



Order Code	MODEL	Tool Style	Spindle	MAX RPM	GearRatio	Nm	L1	A1	A2
MK.001.SQ100	SQT-100M / 10M(S)	AXIAL OFFSET	ER-32	5000	1:1 >	55	98	50	
MK.021.SQ100	SQT-100M / 10M(S)	ADJ ANGLE	ER-25	5000	1:1 <	14	79		
MK.030.SQ100	SQT-100M / 10M(S)	SAW-MILL	Upon request	3500	1:1 <	55	100		
MK.010.SQ100	SQT-100M / 10M(S)	RADIAL	ER-32	5000	1:1 <	55	100	85	59
MK.033.SQ100	SQT-100M / 10M(S)	RADIAL SUBSPINDLE	ER-32	5000	1:1 <	55	100	77	59
MK.008.SQ100	SQT-100M / 10M(S)	FACE/SUB-SPINDLE	ER-25/ER-25	5000	1:1 ><	32	100	97	36
MK.001.SQ200	SQT-200M(S)	AXIAL OFFSET	ER-32	5000	1:1 >	55	110	50	
MK.021.SQ200	SQT-200M(S)	ADJ ANGLE	ER-25	5000	1:1 <	14	79		
MK.030.SQ200	SQT-200M(S)	SAW-MILL	Upon request	3500	1:1 <	55	130		
MK.010.SQ200	SQT-200M(S)	RADIAL	ER-32	5000	1:1 <	55	130	89	68
MK.033.SQ200	SQT-200M(S)	RADIAL SUBSPINDLE	ER-32	5000	1:1 <	55	130	89	68
MK.008.SQ200	SQT-200M(S)	FACE/SUB-SPINDLE	ER-32/ER-32	5000	1:1 ><	55	130	117	43

OTHER MODELS PLEASE ASK

© MADAULA SA. SUBJECT TO CHANGE WITHOUT NOTICE



**OPTION CODE**

- > CW INPUT = CW OUTPUT
- < CW INPUT = CCW OUTPUT

**ALSO AVAILABLE:**

- SPEED INCREASING
- SPEED REDUCTION
- RADIAL TOOL REVERSES FOR SUB-SPINDLE

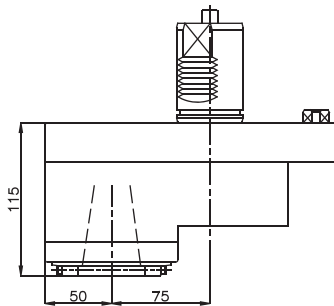


# MAZAK

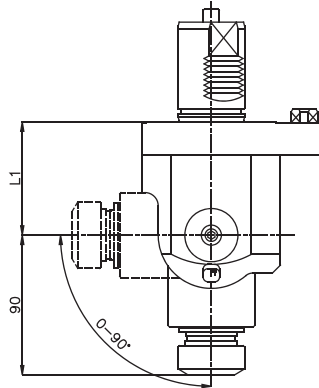
SQT-28M / 30M / 300M(S)  
NEXUS 300M / 350M / 400M / 450M



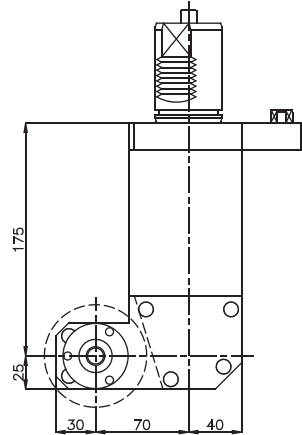
P.001 AXIAL OFFSET  
P.006 AXIAL OFFSET INTERNAL COOLANT



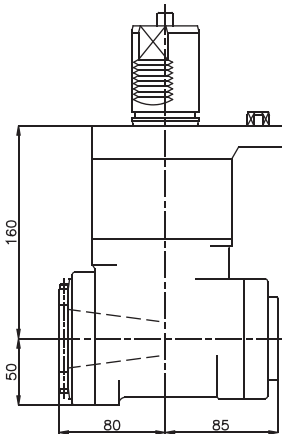
P.021 RADIAL ADJUSTABLE



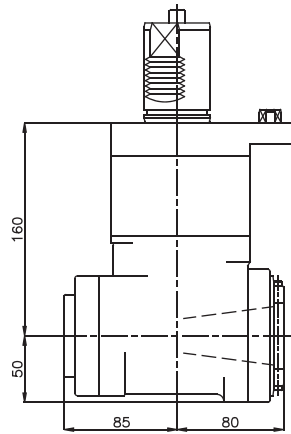
P.030 SAW-MILL



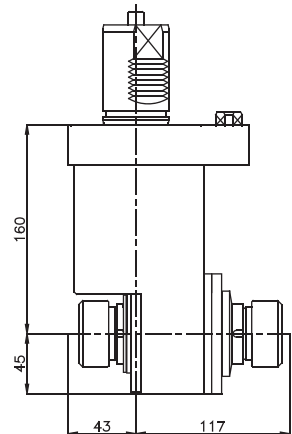
P.010 RADIAL  
P.016 RADIAL INTERNAL COOLANT



P.033 RADIAL SUBSPINDLE



P.008 RADIAL DOUBLE OUTPUT



Order Code	MODEL	Tool Style	Spindle	MAX RPM	GearRatio	Nm	L1
MK.001.SQ28	SQT-28M / 30M / 300M(S)	AXIAL OFFSET	ISO-40	3000	1:1 >	86	
MK.021.SQ28	SQT-28M / 30M / 300M(s)	ADJ ANGLE	ER-32	3000	1:1 <	35	79
MK.030SQ28	SQT-28M / 30M / 300M(S)	SAW-MILL	Upon request	3000	1:1 <	86	
MK.010.SQ28	SQT-28M / 30M / 300M(S)	RADIAL	ISO-40	3000	1:1 <	86	
MK.011.SQ28	SQT-28M / 30M / 300M(S)	RADIAL SUBSPINDLE	ISO-40	3000	1:1 <	86	
MK.008.SQ28	SQT-28M / 30M / 300M(S)	FACE/SUB-SPINDLE	ER-32	3000	1:1 <	86	

OTHER MODELS PLEASE ASK © MADAULA SA. SUBJECT TO CHANGE WITHOUT NOTICE

**OPTION CODE**

- > CW INPUT = CW OUTPUT
- < CW INPUT = CCW OUTPUT

**ALSO AVAILABLE:**

- SPEED INCREASING
- SPEED REDUCTION
- RADIAL TOOL REVERSES FOR SUB-SPINDLE

**FOR MORE INFORMATION ASK FOR SPECIFIC LITERATURE**



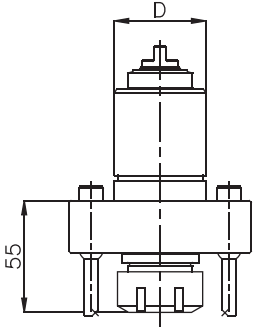


# MIYANO

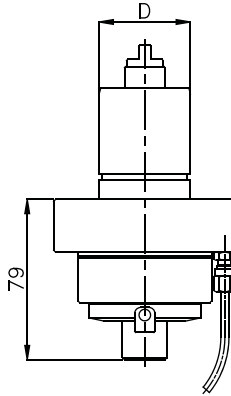
ABX 51 / 64



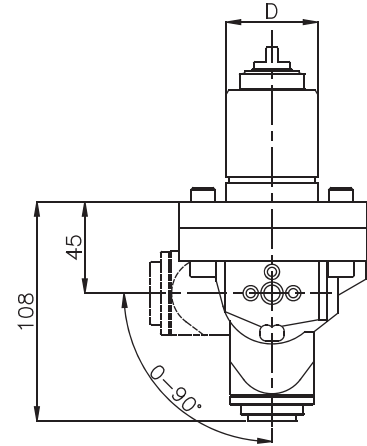
P.000 AXIAL  
P.005 AXIAL INTERNAL COOLANT



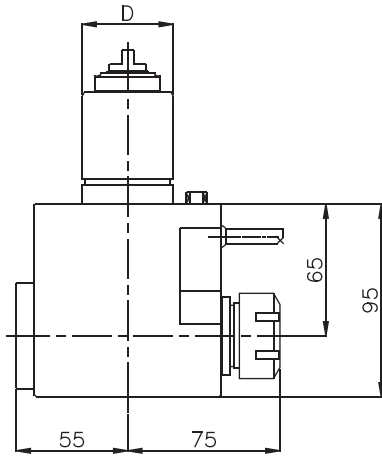
P.038 SHELL END MILL



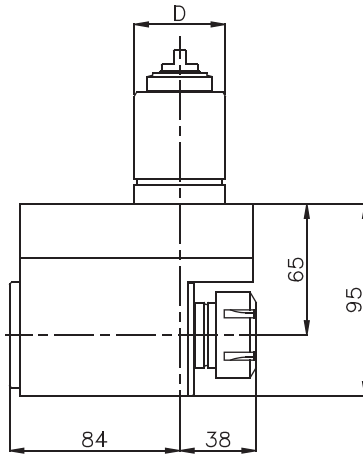
P.021 RADIAL ADJUSTABLE



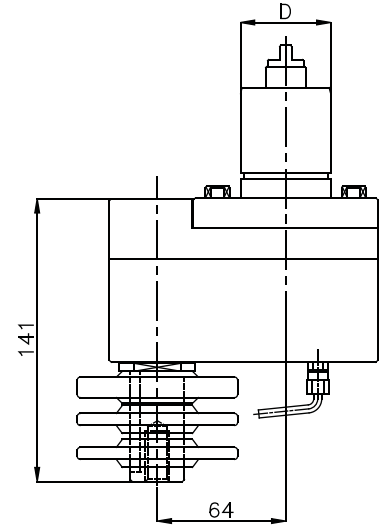
P.010 RADIAL  
P.016 RADIAL INTERNAL COOLANT



P.011 RADIAL SET-BACK  
P.017 RADIAL SET-BACK INTERNAL COOLANT



P.030 SAW-MILL



Order Code	MODEL	Tool Style	Spindle	MAX RPM	GearRatio	Nm	D
MY.000.ABX	ABX51/64	AXIAL	ER-25	6000	1:1 >	32	Ø 45
MY.021.ABX	ABX51/64	ADJ ANGLE	ER-16	6000	1:1 <	7	Ø 45
MY.030.ABX	ABX51/64	SAW-MILL	Upon request	2500	2:1 <	32	Ø 45
MY.010.ABX	ABX51/64	RADIAL	ER-25	6000	1:1 <	32	Ø 45
MY.011.ABX	ABX51/64	RADIAL SET-BACK	ER-25	6000	1:1 >	32	Ø 45
MY.038.ABX	ABX51/64	SHELL END MILL	Upon request	2500	1:1 <	32	Ø 45

OTHER MODELS PLEASE ASK © MADAULA SA. SUBJECT TO CHANGE WITHOUT NOTICE

**OPTION CODE**

- CW INPUT = CW OUTPUT
- CW INPUT = CCW OUTPUT

**FOR MORE INFORMATION ASK FOR SPECIFIC LITERATURE**



**ALSO AVAILABLE:**  
SPEED INCREASING  
SPEED REDUCTION  
RADIAL TOOL REVERSES FOR SUB-SPINDLE

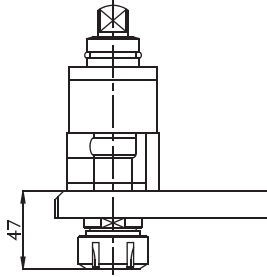


# MORI SEIKI

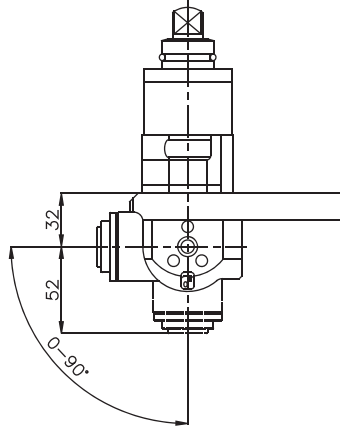
SL / ZL -150(MC)  
SL 153-154(MC)



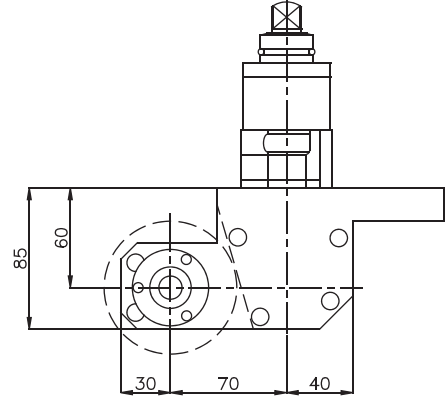
P.001 AXIAL OFFSET  
P.006 AXIAL OFFSET INTERNAL COOLANT



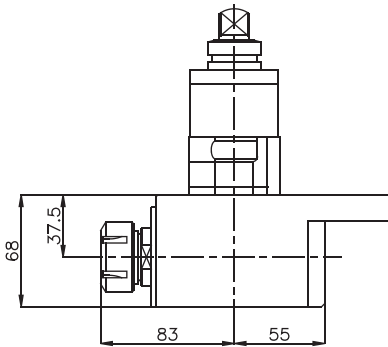
P.021 RADIAL ADJUSTABLE



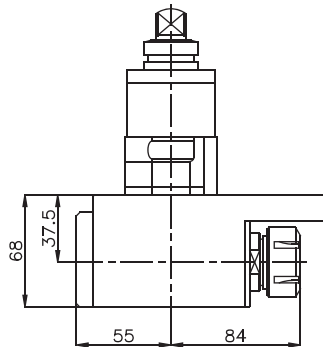
P.030 SAW-MILL



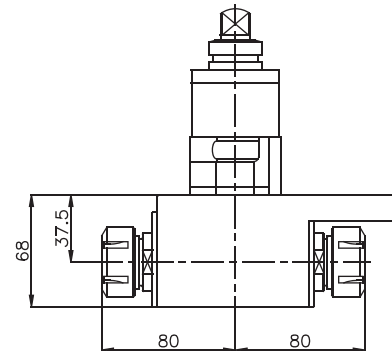
P.010 RADIAL  
P.016 RADIAL INTERNAL COOLANT



P.033 RADIAL SUBSPINDLE



P.008 RADIAL DOUBLE OUTPUT



Order Code	MODEL	Tool Style	Spindle	MAX RPM	GearRatio	Nm
MS.001.SL50	SL / ZL - 150-153-154	AXIAL OFFSET	ER-25	6000	1:1 >	32
MS.021.SL50	SL / ZL - 150-153-154	ADJ ANGLE	ER-16	6000	1:1 <	7
MS.030.SL50	SL / ZL - 150-153-154	SAW-MILL	Upon request	3000	1:1 <	32
MS.010.SL50	SL / ZL - 150-153-154	RADIAL	ER-25	6000	1:1 <	32
MS.011.SL50	SL / ZL - 150-153-154	RADIAL SUBSPINDLE	ER-25	6000	1:1 <	32
MS.008.SL50	SL / ZL - 150-153-154	FACE/SUB-SPINDLE	ER-20/ER-20	6000	1:1 ><	32

OTHER MODELS PLEASE ASK © MADAULA SA. SUBJECT TO CHANGE WITHOUT NOTICE

OPTION CODE

- > CW INPUT = CW OUTPUT
- < CW INPUT = CCW OUTPUT

ALSO AVAILABLE:  
SPEED INCREASING  
SPEED REDUCTION  
RADIAL TOOL REVERSES FOR SUB-SPINDLE

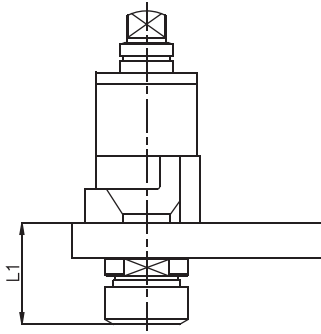


# MORI SEIKI

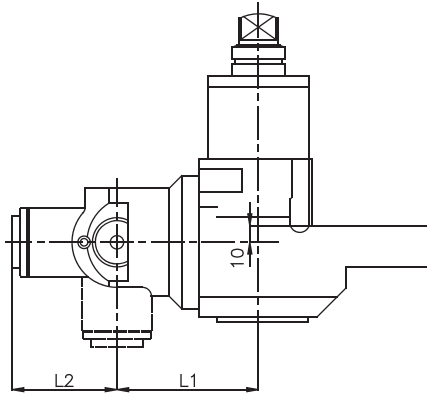
SL / ZL -200-250(MC)  
SL-203 / 204 / 205  
SL-2500 Y SL-300



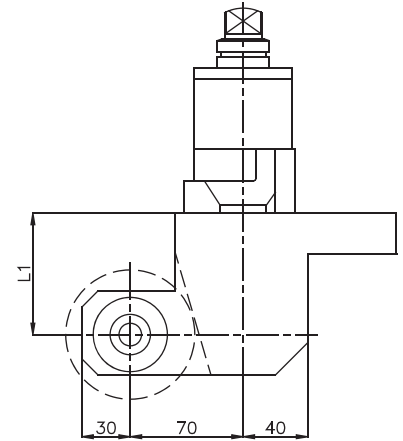
P.001 AXIAL OFFSET  
P.006 AXIAL OFFSET INTERNAL COOLANT



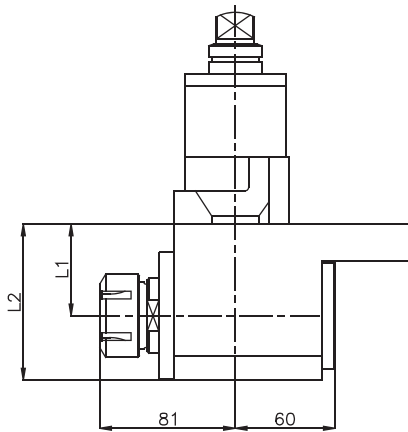
P.021 RADIAL ADJUSTABLE



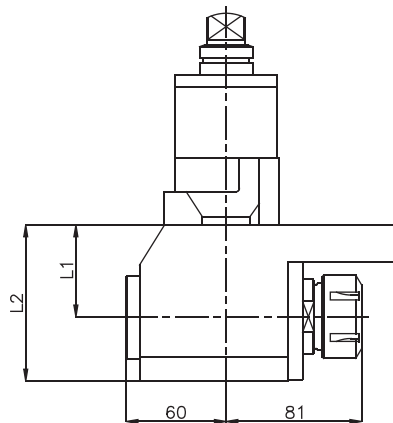
P.030 SAW-MILL



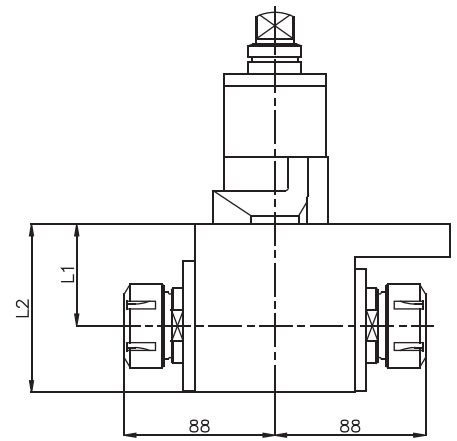
P.010 RADIAL  
P.016 RADIAL INTERNAL COOLANT



P.033 RADIAL SUBSPINDLE



P.008 RADIAL DOUBLE OUTPUT



Order Code	MODEL	Tool Style	Spindle	MAX RPM	GearRatio	Nm	L1	L2
MS.001.SL200	SL / ZL-200 / 250, SL-2500Y	AXIAL OFFSET	ER-32	4000	1:1 >	55	61	
MS.021.SL200	SL / ZL-200 / 250, SL-2500Y	ADJ ANGLE	ER-16	4000	1:1 <	7	85	63
MS.030.SL200	SL / ZL-200 / 250, SL-2500Y	SAW-MILL	Upon request	3000	1:1 <	55	75	
MS.010.SL200	SL / ZL-200 / 250, SL-2500Y	RADIAL	ER-32	4000	1:1 <	55	55	94
MS.033.SL200	SL / ZL-200 / 250, SL-2500Y	RADIAL SUBSPINDLE	ER-32	4000	1:1 <	55	55	94
MS.008.SL200	SL / ZL-200 / 250, SL-2500Y	FACE/SUB-SPINDLE	ER-25/ER-25	4000	1:1 ><	55	55	90
MS.001.SL300	SL-300	AXIAL OFFSET	ER-32	4000	1:1 >	55	59	
MS.021.SL300	SL-300	ADJ ANGLE	ER-25	4000	1:1 <	14	94	86
MS.030.SL300	SL-300	SAW-MILL	Upon request	3000	1:1 <	55	70	
MS.010.SL300	SL-300	RADIAL	ER-32	4000	1:1 <	55	40	72,5
MS.033.SL300	SL-300	RADIAL SUBSPINDLE	ER-32	4000	1:1 <	55	40	72,5
MS.008.SL300	SL-300	FACE/SUB-SPINDLE	ER-25/ER-25	4000	1:1 ><	55	40	72,5

OTHER MODELS PLEASE ASK

© MADAULA SA. SUBJECT TO CHANGE WITHOUT NOTICE



- OPTION CODE
- > CW INPUT = CW OUTPUT
  - < CW INPUT = CCW OUTPUT

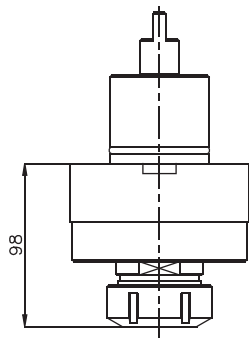
- ALSO AVAILABLE:
- SPEED INCREASING
  - SPEED REDUCTION
  - RADIAL TOOL REVERSES FOR SUB-SPINDLE

# MORI SEIKI

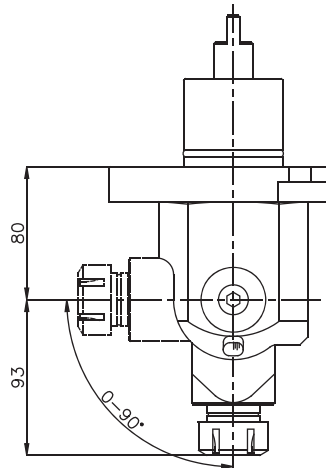
NL 1500-2000-2500-3000



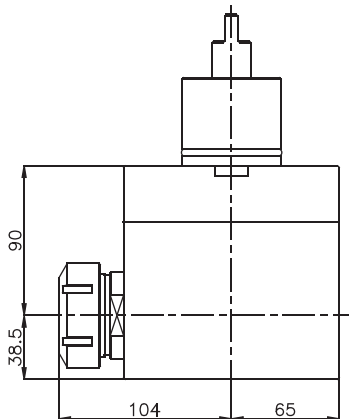
P.000 AXIAL  
P.005 AXIAL INTERNAL COOLANT



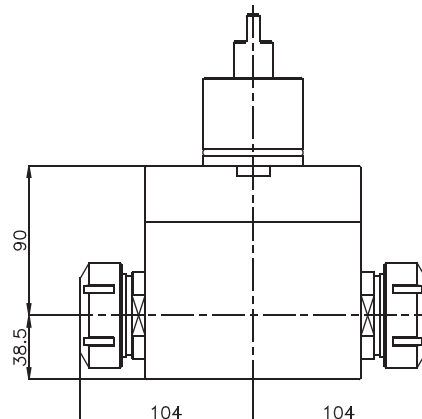
P.021 RADIAL ADJUSTABLE



P.010 RADIAL  
P.016 RADIAL INTERNAL COOLANT



P.008 RADIAL DOUBLE OUTPUT



Order Code	MODEL	Tool Style	Spindle	MAX RPM	GearRatio	Nm
MS.000.NL2000	NL 1500-2000	AXIAL	ER-32	6000	1:1 >	55
MS.021.NL2000	NL 1500-2000	ADJ ANGLE	ER-25	6000	1:1 <	14
MS.010.NL2000	NL 1500-2000	RADIAL	ER-32	6000	1:1 <	55
MS.008.NL2000	NL 1500-2000	FACE/SUB-SPINDLE	ER-25/ER-25	6000	1:1 ><	32
MS.000.NL3000	NL 2500-3000	AXIAL	ER-40	6000	1:1 >	86
MS.021.NL3000	NL 2500-3000	ADJ ANGLE	ER-25	6000	1:1 <	14
MS.010.NL3000	NL 2500-3000	RADIAL	ER-40	6000	1:1 <	86
MS.008.NL3000	NL 2500-3000	FACE/SUB-SPINDLE	ER-32/ER-32	6000	1:1 ><	55

OTHER MODELS PLEASE ASK © MADAULA SA. SUBJECT TO CHANGE WITHOUT NOTICE

**OPTION CODE**

- > CW INPUT = CW OUTPUT
- < CW INPUT = CCW OUTPUT

FOR MORE INFORMATION ASK FOR SPECIFIC LITERATURE

ALSO AVAILABLE:  
SPEED INCREASING  
SPEED REDUCTION  
RADIAL TOOL REVERSES FOR SUB-SPINDLE



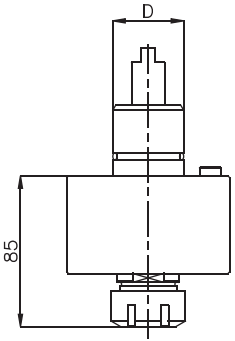


# MURATEC

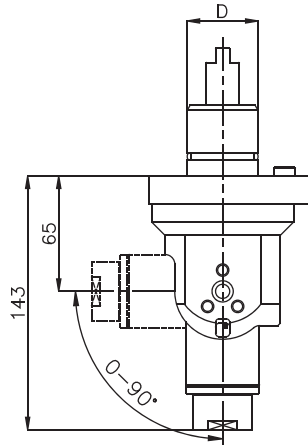
## MT-12, MT-20



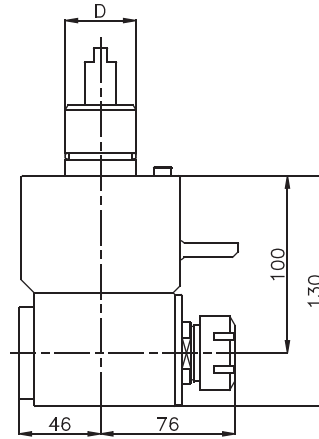
P.000 AXIAL  
P.005 AXIAL INTERNAL COOLANT



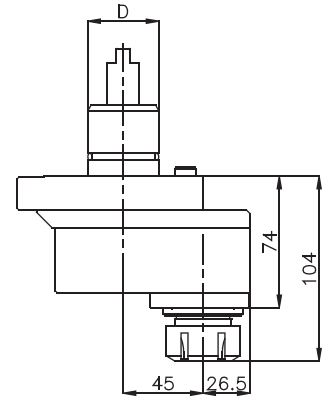
P.021 RADIAL ADJUSTABLE



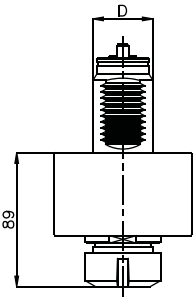
P.010 RADIAL  
P.016 RADIAL INTERNAL COOLANT



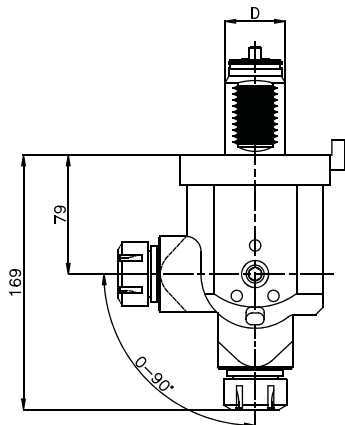
P.001 AXIAL OFFSET  
P.006 AXIAL OFFSET INTERNAL COOLANT



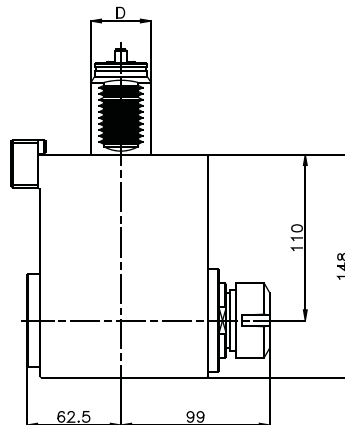
P.000 AXIAL  
P.005 AXIAL INTERNAL COOLANT



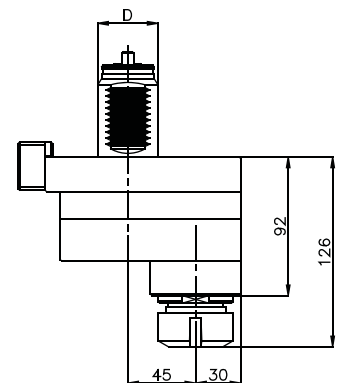
P.021 RADIAL ADJUSTABLE



P.010 RADIAL  
P.016 RADIAL INTERNAL COOLANT



P.001 AXIAL OFFSET  
P.006 AXIAL OFFSET INTERNAL COOLANT



Order Code	MODEL	Tool Style	Spindle	MAX RPM	GearRatio	Nm	D
MU.000.MT12	MT-12	AXIAL	ER-25	5000	1:1 >	32	Ø 40
MU.021.MT12	MT-12	ADJ ANGLE	ER-16	5000	1:1 <	7	Ø 40
MU.010.MT12	MT-12	RADIAL	ER-25	5000	1:1 <	32	Ø 40
MU.001.MT12	MT-12	AXIAL OFFSET	ER-25	5000	1:1 <	32	Ø 40
MU.000.MT20	MT-20	AXIAL	ER-32	4000	1:1 >	55	VDI-40
MU.021.MT20	MT-20	ADJ ANGLE	ER-25	4000	1:1 <	14	VDI-40
MU.010.MT20	MT-20	RADIAL	ER-32	4000	1:1 <	55	VDI-40
MU.001.MT20	MT-20	AXIAL OFFSET	ER-32	4000	1:1 <	55	VDI-40

OTHER MODELS PLEASE ASK © MADAULA SA. SUBJECT TO CHANGE WITHOUT NOTICE

**OPTION CODE**

- CW INPUT = CW OUTPUT
- CW INPUT = CCW OUTPUT

ALSO AVAILABLE:  
SPEED INCREASING  
SPEED REDUCTION  
RADIAL TOOL REVERSES FOR SUB-SPINDLE

FOR MORE INFORMATION ASK FOR SPECIFIC LITERATURE

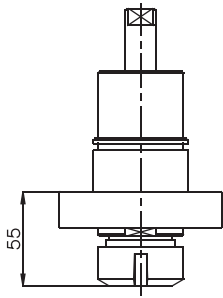


# NAKAMURA

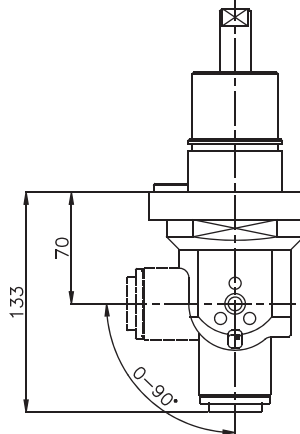
TW-10, SC150, SC250, WT-20, WT-250,  
TMC18, WTW-150, WTS-150, WT-150



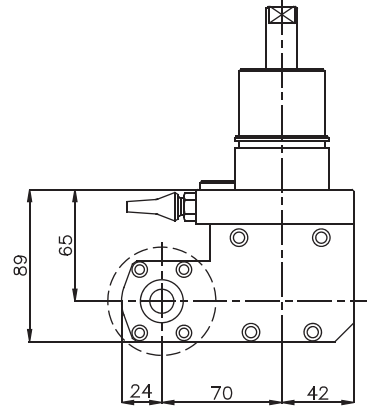
P.000 AXIAL  
P.005 AXIAL INTERNAL COOLANT



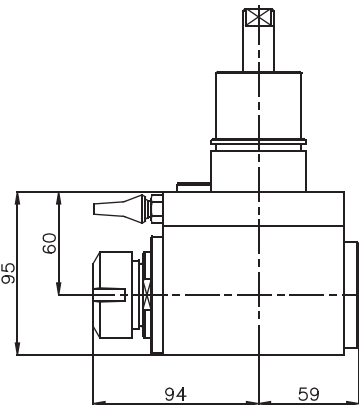
P.021 RADIAL ADJUSTABLE



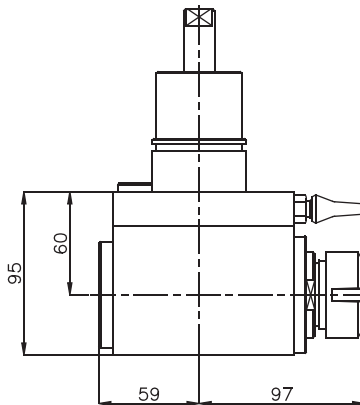
P.030 SAW-MILL



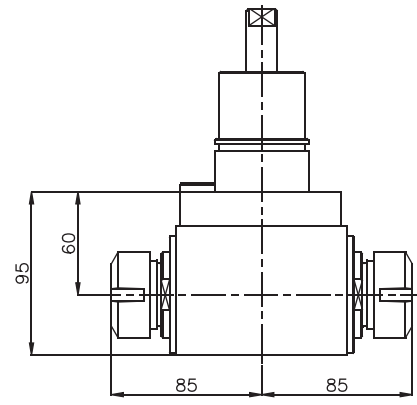
P.010 RADIAL  
P.016 RADIAL INTERNAL COOLANT



P.033 RADIAL SUBSPINDLE



P.008 RADIAL DOUBLE OUTPUT



Order Code	MODEL	Tool Style	Spindle	MAX RPM	GearRatio	Nm
NK.000.TW10	TW-10, SC150, SC250, WT-250, TMC18	AXIAL	ER-25	5000	1:1 >	32
NK.021.TW10	TW-10, SC150, SC250, WT-250, TMC18	ADJ ANGLE	ER-16	5000	1:1 <	7
NK.030.TW10	TW-10, SC150, SC250, WT-250, TMC18	SAW-MILL	Upon request	3000	1:1 <	32
NK.010.TW10	TW-10, SC150, SC250, WT-250, TMC18	RADIAL	ER-32	4000	1:1 <	55
NK.010.TW10	TW-10, SC150, SC250, WT-250, TMC18	RADIAL	ER-25	5000	1:1 >	32
NK.033.TW10	TW-10, SC150, SC250, WT-250, TMC18	RADIAL SUBSPINDLE	ER-25	5000	1:1 <	32
NK.008.TW10	TW-10, SC150, SC250, WT-250, TMC18	FACE/SUB-SPINDLE	ER-20/ER-20	5000	1:1 <<	32

OTHER MODELS PLEASE ASK © MADAULA SA. SUBJECT TO CHANGE WITHOUT NOTICE

**OPTION CODE**

- CW INPUT = CW OUTPUT
- CW INPUT = CCW OUTPUT

**ALSO AVAILABLE:**

- SPEED INCREASING
- SPEED REDUCTION
- RADIAL TOOL REVERSES FOR SUB-SPINDLE

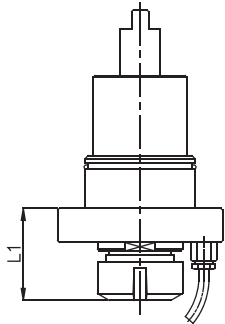


# NAKAMURA

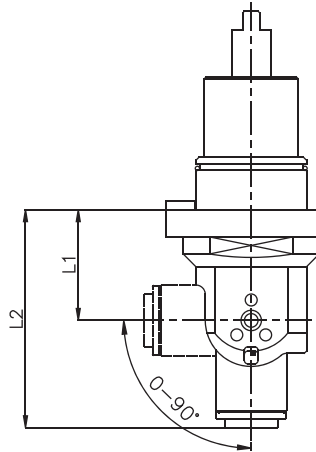
TW-20, SC300, WT-300,  
TW-30, SC450, STW-40



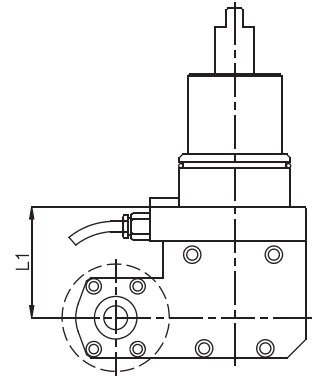
P.000 AXIAL  
P.005 AXIAL INTERNAL COOLANT



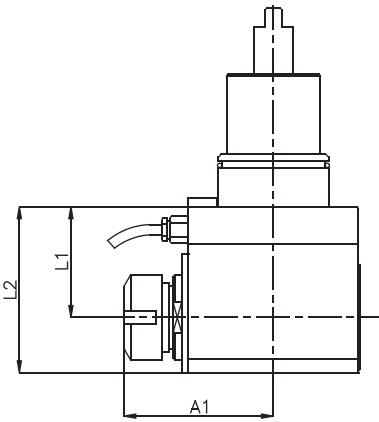
P.021 RADIAL ADJUSTABLE



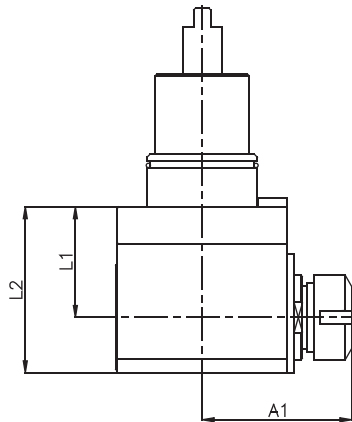
P.030 SAW-MILL



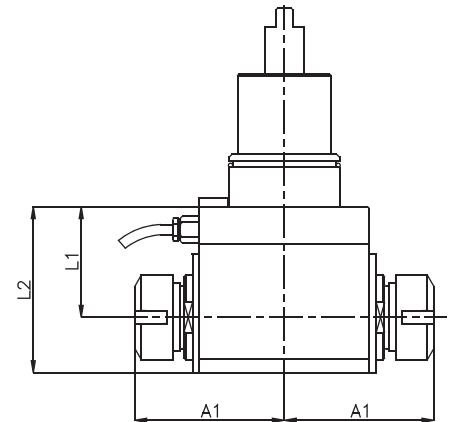
P.010 RADIAL  
P.016 RADIAL INTERNAL COOLANT



P.033 RADIAL SUBSPINDLE



P.008 RADIAL DOUBLE OUTPUT



Order Code	MODEL	Tool Style	Spindle	MAX RPM	GearRatio	Nm	L1	L2	A1
NK.000.TW20	TW-20/SC300	AXIAL	ER-32	4000	1:1 >	55	55		
NK.021.TW20	TW-20/SC300	ADJ ANGLE	ER-16	4000	1:1 <	7	49	112	
NK.030.TW20	TW-20/SC300	SAW-MILL	Upon request	3000	1:1 <	55	65		
NK.010.TW20	TW-20/SC300	RADIAL	ER-32	4000	1:1 <	55	65	98	87,5
NK.033.TW20	TW-20/SC300	RADIAL SUBSPINDLE	ER-32	4000	1:1 <	55	65	98	87,5
NK.008.TW20	TW-20/SC300	FACE/SUB-SPINDLE	ER-25/25	4000	1:1 ><	32	65	105	88
NK.000.TW30	TW-30/SC450	AXIAL	ER-40	4000	1:1 >	86	76		
NK.021.TW30	TW-30/SC450	ADJ ANGLE	ER-25	4000	1:1 <	32	49	139	
NK.030.TW30	TW-30/SC450	SAW-MILL	Upon request	3000	1:1 <	55	90		
NK.010.TW30	TW-30/SC450	RADIAL	ER-40	4000	1:1 <	86	90	130	80

OTHER MODELS PLEASE ASK

© MADAULA SA. SUBJECT TO CHANGE WITHOUT NOTICE



**OPTION CODE**

- CW INPUT = CW OUTPUT
- CW INPUT = CCW OUTPUT

**ALSO AVAILABLE:**

- SPEED INCREASING
- SPEED REDUCTION
- RADIAL TOOL REVERSES FOR SUB-SPINDLE

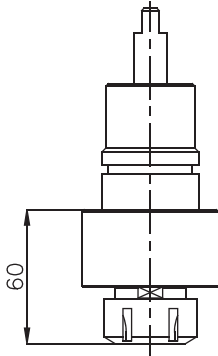


# NAKAMURA

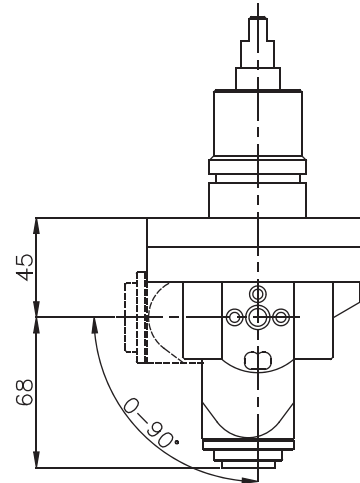
WT-100  
NTY3



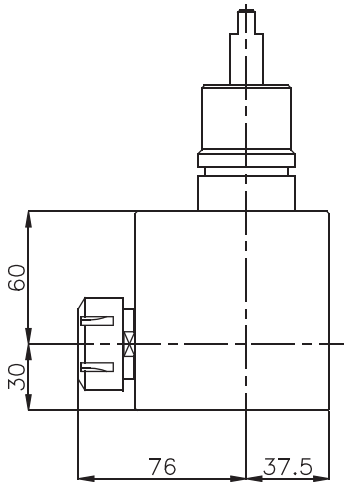
P.000 AXIAL  
P.005 AXIAL INTERNAL COOLANT



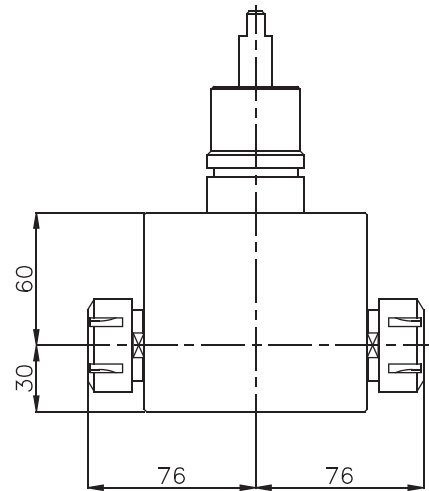
P.021 RADIAL ADJUSTABLE



P.011 RADIAL SET-BACK  
P.017 RADIAL SET-BACK INTERNAL COOLANT



P.008 RADIAL DOUBLE OUTPUT



Order Code	MODEL	Tool Style	Spindle	MAX RPM	GearRatio	Nm
NK.000.WT100	WT-100 / NTY3	AXIAL	ER-25	6000	1:1 >	32
NK.021.WT100	WT-100 / NTY3	ADJ ANGLE	ER-16	6000	1:1 <	7
NK.010.WT100	WT-100 / NTY3	RADIAL	ER-25	3000	1:1 <	32
NK.008.WT100	WT-100 / NTY3	FACE/SUB-SPINDLE	ER-25/ER-25	6000	1:1 <	32

OTHER MODELS PLEASE ASK © MADAULA SA. SUBJECT TO CHANGE WITHOUT NOTICE

**OPTION CODE**

- > CW INPUT = CW OUTPUT
- < CW INPUT = CCW OUTPUT

**ALSO AVAILABLE:**

- SPEED INCREASING
- SPEED REDUCTION
- RADIAL TOOL REVERSES FOR SUB-SPINDLE

**FOR MORE INFORMATION ASK FOR SPECIFIC LITERATURE**

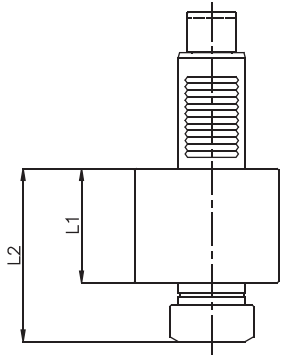


# OKUMA

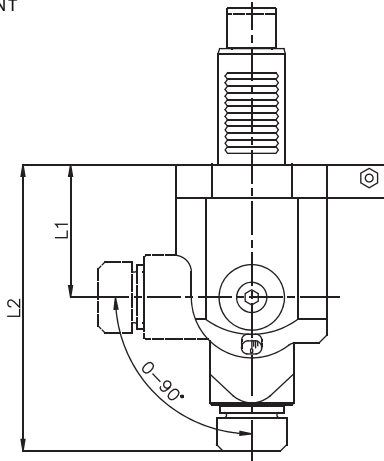
LB-10M, LB-200M  
LB-15M, LU-15M, LR-15  
LB-300M, CAPTAIN L370-M



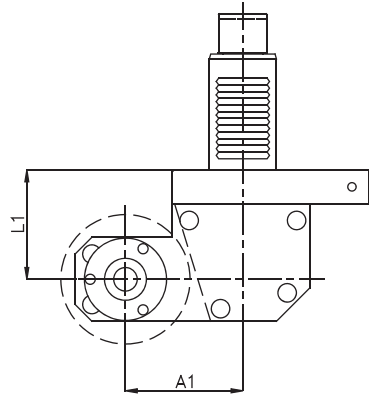
P.000 AXIAL  
P.005 AXIAL INTERNAL COOLANT



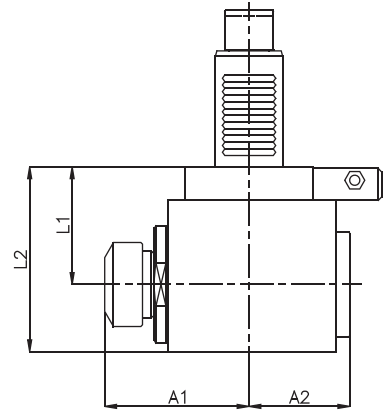
P.021 RADIAL ADJUSTABLE



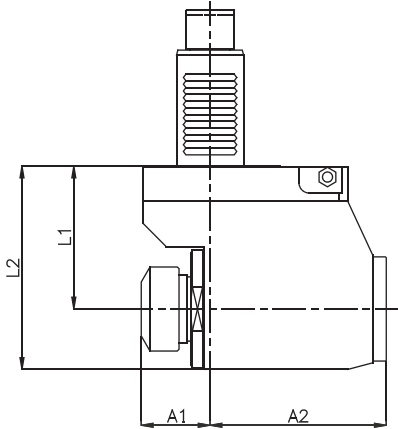
P.030 SAW-MILL



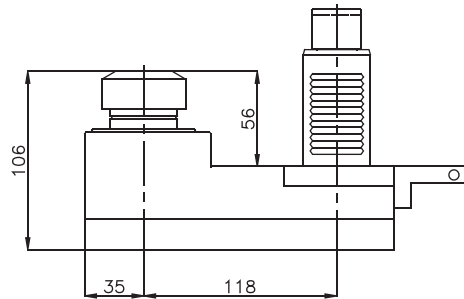
P.010 RADIAL  
P.016 RADIAL INTERNAL COOLANT



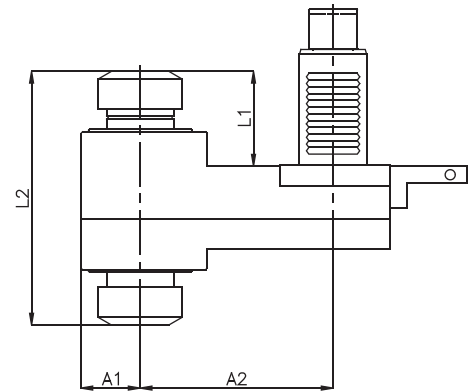
P.011 RADIAL SET-BACK  
P.017 RADIAL SET-BACK INTERNAL COOLANT



P.033 RADIAL SUBSPINDLE



P.008 RADIAL DOUBLE OUTPUT



Order Code	MODEL	Tool Style	Spindle	MAX RPM	GearRatio	Nm	L1	L2	A1	A2
OK.000.LB200	LB-200M, LB-10M	AXIAL	ER-25	6000	1:1 >	30	75	106		
OK.021.LB200	LB-200M, LB-10M	ADJ ANGLE	ER-16	6000	1:1 <	18	56	119		
OK.030.LB200	LB-200M, LB-10M	SAW-MILL	Upon request	3000	1:1 <	30	70		70	
OK.011.LB200	LB-200M, LB-10M	RADIAL SET-BACK	ER-25	4000	1:1 <	30	65	95	35	85
OK.033.LB200	LB-200M, LB-10M	FACE/SUB-SPINDLE	ER-20/20	4000	1:1 <>	30	30	115	30	110
OK.000.LB300	LB-300M, LB-15M, LU-15M	AXIAL	ER-32	5000	1:1 >	50	103	68		
OK.021.LB300	LB-300M, LB-15M, LU-15M	ADJ ANGLE	ER-25	5000	1:1 <	25	79	169		
OK.030.LB300	LB-300M, LB-15M, LU-15M	SAW-MILL	Upon request	3000	1:1 <	50	65		70	
OK.010.LB300	LB-300M, LB-15M, LU-15M	RADIAL	ER-32	5000	1:1 <	50	70	110	90	60
OK.011.LB300	LB-300M, LB-15M, LU-15M	RADIAL SET-BACK	ER-32	5000	1:1 >	50	85	125	40	105
OK.033.LB300	LB-300M, LB-15M, LU-15M	RADIAL SUBSPINDLE	ER-32	5000	1:1 <	50				
OK.008.LB300	LB-300M, LB-15M, LU-15M	FACE/SUB-SPINDLE	ER-32/32	5000	1:1 <>	50	56	151	35	118

OTHER MODELS PLEASE ASK

© MADAULA S.A. SUBJECT TO CHANGE WITHOUT NOTICE



**OPTION CODE**

- CW INPUT = CW OUTPUT
- CW INPUT = CCW OUTPUT

**ALSO AVAILABLE:**

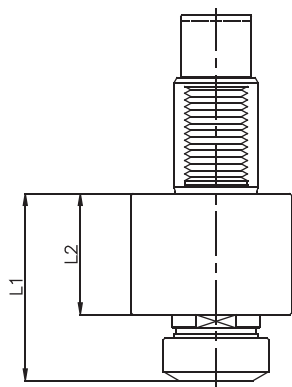
- SPEED INCREASING
- SPEED REDUCTION
- RADIAL TOOL REVERSES FOR SUB-SPINDLE

# OKUMA

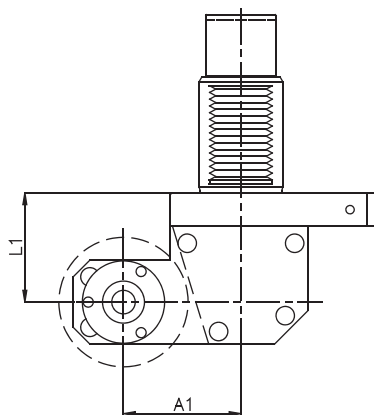
LB-25M, LU-25M, LB-400M, CAPTAIN L470-M  
LB-35M, LU-35M



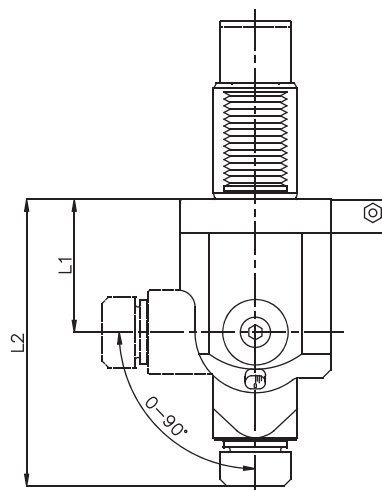
P.000 AXIAL  
P.005 AXIAL INTERNAL COOLANT



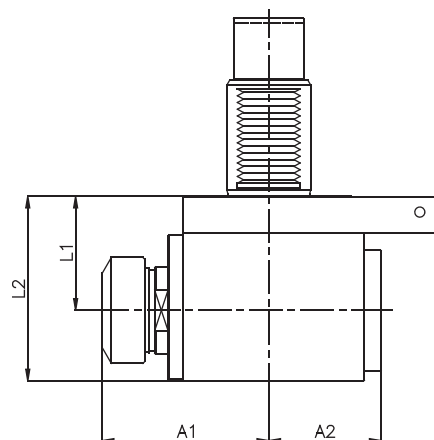
P.030 SAW-MILL



P.021 RADIAL ADJUSTABLE



P.010 RADIAL  
P.016 RADIAL INTERNAL COOLANT



Order Code	MODEL	Tool Style	Spindle	MAX RPM	GearRatio	Nm	L1	L2	A1	A2
OK.000.LB400	LB-400M, LB-25M, LU-25M	AXIAL	ER-40	4000	1:1 >	86	115	77		
OK.021.LB400	LB-400M, LB-25M, LU-25M	ADJ ANGLE	ER-25	4000	1:1 <	14	79	169		
OK.030.LB400	LB-400M, LB-25M, LU-25M	SAW-MILL	Upon request	2500	1:1 <	86	65		70	
OK.010.LB400	LB-400M, LB-25M, LU-25M	RADIAL	ER-40	4000	1:1 <	86	75	125	100	67
OK.000.LB35	LB-35M	AXIAL	ER-40	4000	1:1 >	86	140	83		
OK.021.LB35	LB-35M	ADJ ANGLE	ER-25	4000	1:1 <	14	85	190		
OK.030.LB35	LB-35M	SAW-MILL	Upon request	2500	1:1 <	86	115		70	
OK.010.LB35	LB-35M	RADIAL	ER-40	4000	1:1 <	86	68	110	100	67

OTHER MODELS PLEASE ASK © MADAULA SA. SUBJECT TO CHANGE WITHOUT NOTICE

**OPTION CODE**

- > CW INPUT = CW OUTPUT
- < CW INPUT = CCW OUTPUT

**ALSO AVAILABLE:**

- SPEED INCREASING
- SPEED REDUCTION
- RADIAL TOOL REVERSES FOR SUB-SPINDLE





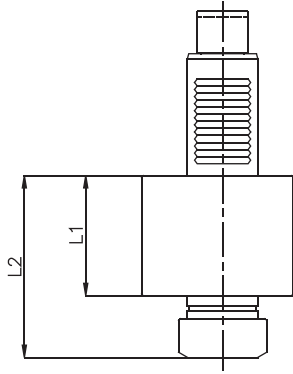
# OKUMA

LT-10M  
LT-15M  
LT-25M

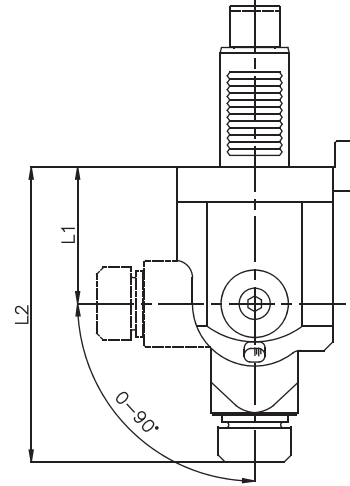


P.000 AXIAL  
P.005 AXIAL INTERNAL COOLANT

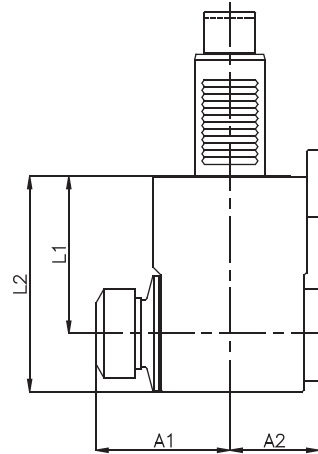
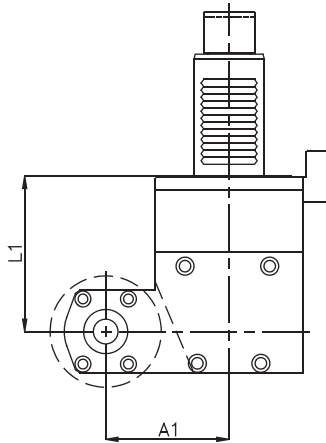
P.021 RADIAL ADJUSTABLE



P.030 SAW-MILL



P.010 RADIAL  
P.016 RADIAL INTERNAL COOLANT



Order Code	MODEL	Tool Style	Spindle	MAX RPM	GearRatio	Nm	L1	L2	A1	A2
OK.000.LT10	LT-10M	AXIAL	ER-25	6000	1:1 >	32	106	75		
OK.021.LT10	LT-10M	ADJ ANGLE	ER-16	6000	1:1 <	7	56	119		
OK.030.LT10	LT-10M	SAW-MILL	Upon request	3000	1:1 <	32	75		70	
OK.010.LT10	LT-10M	RADIAL	ER-25	6000	1:1 <	32	85	117	69	59
OK.000.LT15	LT-15M	AXIAL	ER-32	5000	1:1 >	55	103	68		
OK.021.LT15	LT-15M	ADJ ANGLE	ER-25	5000	1:1 <	14	73	163		
OK.030.LT15	LT-15M	SAW-MILL	Upon request	3000	1:1 <	55	90		70	
OK.010.LT15	LT-15M	RADIAL	ER-32	5000	1:1 <	55	90	125	85	60
OK.000.LT25	LT-25M	AXIAL	ER-32	4000	1:1 >	55	103	68		
OK.021.LT25	LT-25M	ADJ ANGLE	ER-25	4000	1:1 <	14	73	163		
OK.030.LT25	LT-25M	SAW-MILL	Upon request	2500	1:1 <	55	90		70	
OK.010.LT25	LT-25M	RADIAL	ER-32	4000	1:1 <	55	90	125	85	60

OTHER MODELS PLEASE ASK

© MADAULA SA. SUBJECT TO CHANGE WITHOUT NOTICE



**OPTION CODE**

- CW INPUT = CW OUTPUT
- CW INPUT = CCW OUTPUT

**ALSO AVAILABLE:**

- SPEED INCREASING
- SPEED REDUCTION
- RADIAL TOOL REVERSES FOR SUB-SPINDLE

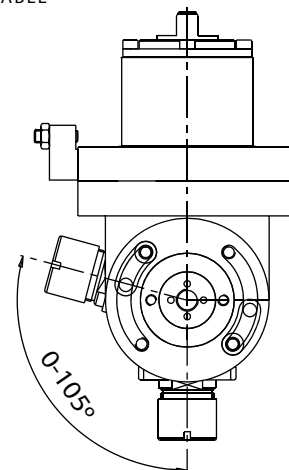
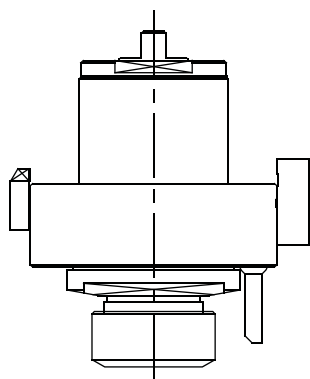
# OKUMA

LB 2000-2500-3000 EX M / MY  
LB 4000 EX M / MY

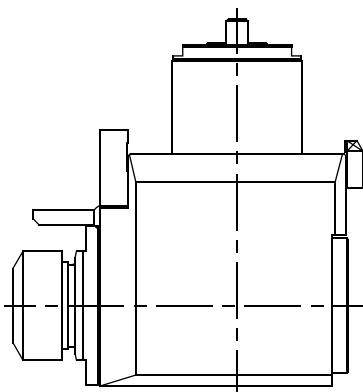


P.021 RADIAL ADJUSTABLE

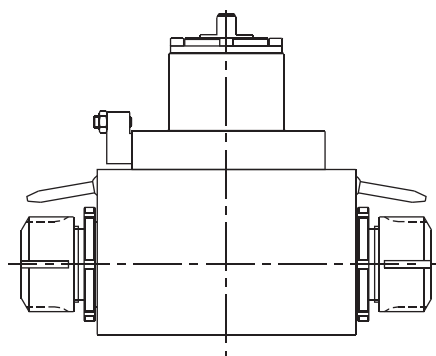
- P.000 AXIAL
- P.005 AXIAL INTERNAL COOLANT



- P.010 RADIAL
- P.016 RADIAL INTERNAL COOLANT



P.008 RADIAL DOUBLE OUTPUT



Order Code	MODEL	Tool Style	Spindle	MAX RPM	GearRatio	Nm
OK.000.LB3000	LB 2000-2500-3000	AXIAL	ER-32	6000	1:1 >	55
OK.021.LB3000	LB 2000-2500-3000	ADJ ANGLE	ER-25	6000	1:1 <	14
OK.010.LB3000	LB 2000-2500-3000	RADIAL	ER-32	6000	1:1 <	55
OK.008.LB3000	LB 2000-2500-3000	FACE/SUB-SPINDLE	ER-32/ER-32	6000	1:1 ><	55
OK.000.LB4000	LB 4000	AXIAL	ER-40	6000	1:1 >	86
OK.021.LB4000	LB 4000	ADJ ANGLE	ER-32	6000	1:1 <	55
OK.010.LB4000	LB 4000	RADIAL	ER-40	6000	1:1 <	86
OK.008.LB4000	LB 4000	FACE/SUB-SPINDLE	ER-40/ER-40	6000	1:1 ><	86

OTHER MODELS PLEASE ASK © MADAULA SA. SUBJECT TO CHANGE WITHOUT NOTICE

**OPTION CODE**

- > CW INPUT = CW OUTPUT
- < CW INPUT = CCW OUTPUT

**ALSO AVAILABLE:**

- SPEED INCREASING
- SPEED REDUCTION
- RADIAL TOOL REVERSES FOR SUB-SPINDLE

FOR MORE INFORMATION ASK FOR SPECIFIC LITERATURE

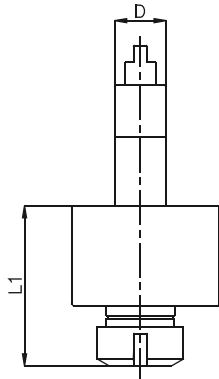




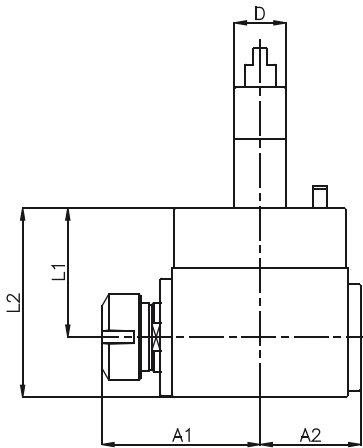
# ROMI

E280 / P425  
E320 / P423

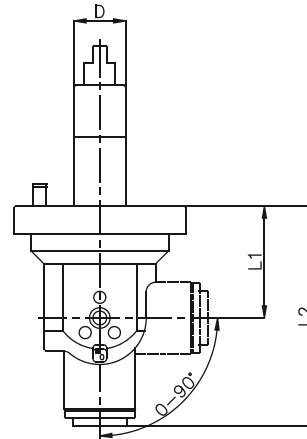
- P.000 AXIAL
- P.005 AXIAL INTERNAL COOLANT



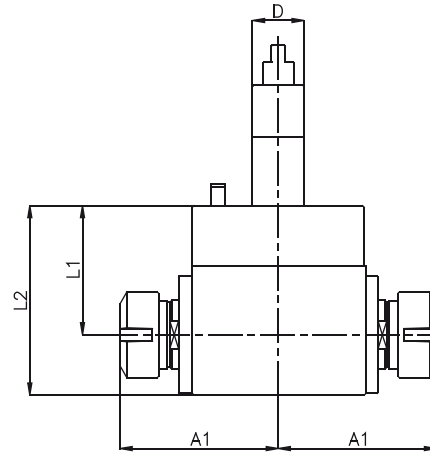
- P.010 RADIAL
- P.016 RADIAL INTERNAL COOLANT



- P.021 RADIAL ADJUSTABLE



- P.008 RADIAL DOUBLE OUTPUT



Order Code	MODEL	Tool Style	Spindle	MAX RPM	GearRatio	Nm	D	L1	L2	A1	A2
RO.000.280	E280 / P425	AXIAL	ER-25	5000	1:1 >	32	Ø 25	88			
RO.021.280	E280 / P425	ADJ ANGLE	ER-16	5000	1:1 <	7	Ø 25	65	128		
RO.010.280	E280 / P425	RADIAL	ER-25	5000	1:1 <	32	Ø 25	60	90	75	50
RO.008.280	E280 / P425	FACE SUB/SPINDLE	ER-25/ER-25	5000	1:1 <<	32	Ø 25	60	90	75	
RO.000.320	E320 / P423	AXIAL	ER-32	5000	1:1 >	55	Ø 30	93			
RO.021.320	E320 / P423	ADJ ANGLE	ER-16	5000	1:1 <	7	Ø 30	65	128		
RO.010.320	E320 / P423	RADIAL	ER-32	5000	1:1 <	55	Ø 30	75	110	92	58
RO.008.320	E320 / P423	FACE SUB/SPINDLE	ER-32/ER-32	5000	1:1 <<	55	Ø 30	75	110	92	

OTHER MODELS PLEASE ASK

© MADAULA SA. SUBJECT TO CHANGE WITHOUT NOTICE

**OPTION CODE**

- CW INPUT = CW OUTPUT
- CW INPUT = CCW OUTPUT

**ALSO AVAILABLE:**

- SPEED INCREASING
- SPEED REDUCTION
- RADIAL TOOL REVERSES FOR SUB-SPINDLE

**FOR MORE INFORMATION ASK FOR SPECIFIC LITERATURE**

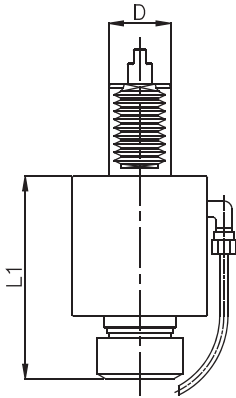


# SCHAUBLIN

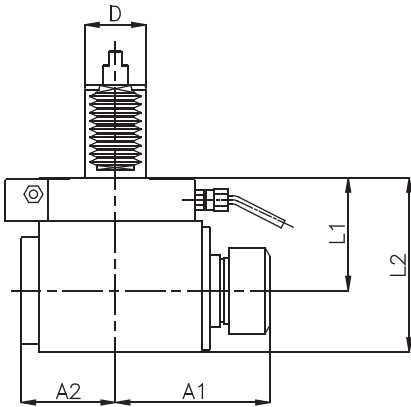
125 CNC, 250 CNC  
140 CNC, 180 CCN



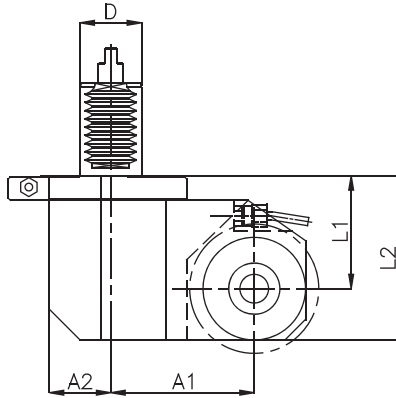
P.001 AXIAL OFFSET  
P.006 AXIAL OFFSET INTERNAL COOLANT



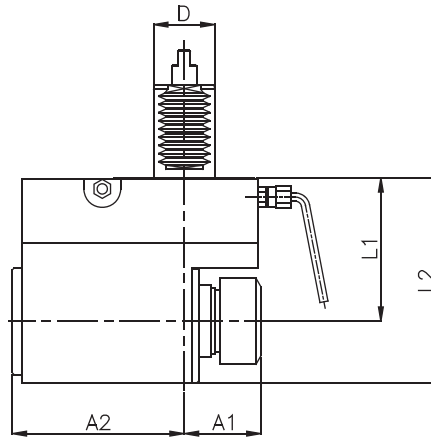
P.010 RADIAL  
P.016 RADIAL INTERNAL COOLANT



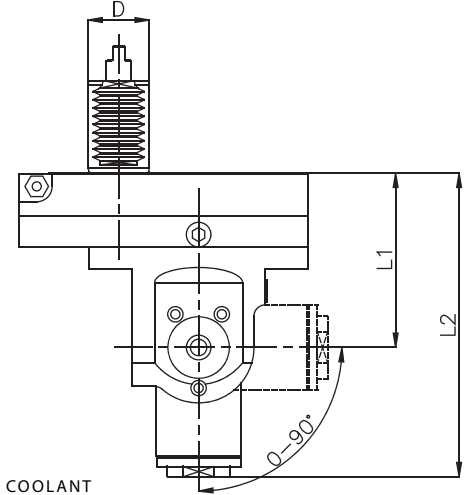
P.030 SAW-MILL



P.011 RADIAL SET-BACK  
P.017 RADIAL SET-BACK INTERNAL COOLANT



P.021 RADIAL ADJUSTABLE



Order Code	MODEL	Tool Style	Spindle	MAX RPM	GearRatio	Nm	D	L1	L2	A1	A2
SC.000.125	125 CNC, 250 CNC	AXIAL	ESX-20	6000	1:1 >	32	Ø 20	94			
SC.021.125	125 CNC, 250 CNC	ADJ ANGLE	ESX-16	6000	1:1 <	7	Ø 20	85	148		
SC.030.125	125 CNC, 250 CNC	SAW-MILL	Upon request	3000	1:1 <	32	Ø 20	55	80	70	30
SC.010.125	125 CNC, 250 CNC	RADIAL	ESX-20	6000	1:1 <	32	Ø 20	55	85	75	46
SC.011.125	125 CNC, 250 CNC	RADIAL SET-BACK	ESX-20	6000	1:1 >	32	Ø 20	70	100	37	84
SC.000.140	140 CNC, 180 CCN	AXIAL	ESX-25	6000	1:1 >	32	Ø 30	98			
SC.021.140	140 CNC, 180 CCN	ADJ ANGLE	ESX-16	6000	1:1 <	7	Ø 30	85	148		
SC.030.140	140 CNC, 180 CCN	SAW-MILL	Upon request	3000	1:1 <	32	Ø 30	55	80	70	30
SC.010.140	140 CNC, 180 CCN	RADIAL	ESX-25	6000	1:1 <	32	Ø 30	55	85	75	46
SC.011.140	140 CNC, 180 CCN	RADIAL SET-BACK	ESX-25	6000	1:1 >	32	Ø 30	70	100	37	84

OTHER MODELS PLEASE ASK © MADAULA SA. SUBJECT TO CHANGE WITHOUT NOTICE

**OPTION CODE**

- > CW INPUT = CW OUTPUT
- < CW INPUT = CCW OUTPUT

ALSO AVAILABLE:  
SPEED INCREASING  
SPEED REDUCTION  
RADIAL TOOL REVERSES FOR SUB-SPINDLE

FOR MORE INFORMATION ASK FOR SPECIFIC LITERATURE



# Innovative High Technology

Live tooling for CNC lathes





ALSO  
AVAILABLE

AUCH  
LIEFERBAR

DISPONIBLES  
ÉGALEMENT

TAMBIÉN  
DISPONIBLES



- ◀ Compensation tapping collets
- ◀ Spannzangen mit Längenausgleich zum Gewindeschneiden
- ◀ Pincas de taradage compensées
- ◀ Pinzas para roscado con compensación



- ◀ Collets
- ◀ Spannzangen
- ◀ Pincas
- ◀ Pinzas

- ▼ Static tooling
- ▼ Werkzeughalter
- ▼ Porteoutils fixes
- ▼ Portaherramientas fijos



## OTHER OPTIONS

- 1 Internal coolant  
Innenkühlmittelzufuhr  
Arrosage interne  
Refrigeración por el centro
- 2 Other spindle types  
Andere Spindelausgänge  
Différents types de sortie  
Distintos tipos de salida
- 3 Left hand version  
Links Ausführung  
Version gauche  
Versión izquierda
- 4 Reducing ratio  
Untersetzung  
Rapport réducteur  
Versión reductora
- 5 Increasing ratio  
Übersetzung  
Rapport multiplicateur  
Versión multiplicadora
- 6 Fixed angle  
Starrwinkel  
Angle fixe  
Angulo fijo
- 7 Multispindle  
Mehrspindelkopf  
Multibroche  
Multihusillo



### NOTE:

Some options can modify the dimensions shown on the catalogue.

### BEMERKUNGEN:

Einige Optionen verändern die Abmessungen im Katalog.

### REMARQUES:

Certaines options peuvent entraîner des modifications de l'encombrement indiqué dans le catalogue.

### NOTA:

Ciertas opciones pueden hacer variar las dimensiones del catálogo.

- ▶ **High precision guaranteed**  
Precision, rigidity, reliability together with technology in continuous improvement, are the qualities of our products both in standard and special construction.
- ▶ **Hohe Präzision garantiert**  
Präzision, Starrheit und Zuverlässigkeit in Verbindung mit ständiger technologischer Weiterentwicklung sind die Eigenschaften unserer Produkte, sowohl Standard als auch Sonderausführung.
- ▶ **Haute precision garantie**  
Grâce à notre technologie de pointe et innovatrice, les principales qualités de nos produits sont la précision, la rigidité et la fiabilité, celles-ci étant appliquées sur notre production aussi bien standard que spéciale.
- ▶ **Alta precisión garantizada**  
Precisión, rigidez, fiabilidad unidos a tecnología en constante avance, son las cualidades de nuestros productos, tanto en ejecución estándar como especial.



**MADAULA S.A.**  
www.madaula.com<sup>®</sup>

Rec del Molí, 11-17  
08105 - Sant Fost de Campsentelles  
BARCELONA - SPAIN  
Tel. 34 93 593 36 00  
Fax. 34 93 570 07 99  
www.madaula.com  
e-mail: comercial@madaula.com

