



**GANG  
TOOLING  
Ø 34**

# STAR

Models:

**ECAS 12/20  
SR 16/20RII  
SR 20R-RII-RIII**

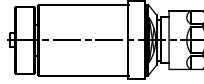
**SR 32J  
SV 12/20/32  
SV 32J-32JII**

*STAR ref.*

ST.000.34

331-50

**AXIAL**



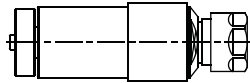
ER-16  
RATIO 1:1  
6.000 RPM MAX.



ST.000.34L

571-55

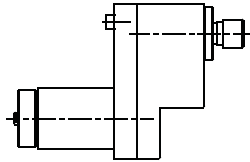
**AXIAL  
LONG**



ER-16  
RATIO 1:1  
6.000 RPM MAX.

ST.001.34

**AXIAL  
OFFSET**

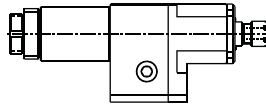


ER-11  
RATIO 1:1  
6.000 RPM MAX.



ST.002.34

**AXIAL  
SPEEDER**

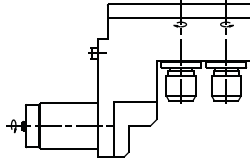


ER-11  
RATIO 1:3.64  
6.000 RPM MAX.

ST.008.34A

541-51

**RADIAL  
2 SPINDLES**



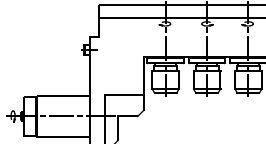
ER-16  
RATIO 1:1  
6.000 RPM MAX.



ST.008.34B

661-51

**RADIAL  
3 SPINDLES**

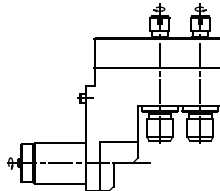


ER-16  
RATIO 1:1  
6.000 RPM MAX.

ST.008.34C

421-59

**RADIAL  
4 SPINDLES**



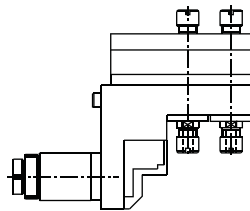
ER-11/ER-16  
RATIO 1:1  
6.000 RPM MAX.



ST.008.34D

661-59

**RADIAL  
4 SPINDLES**



ER-11  
RATIO 1:1  
6.000 RPM MAX.

**SPECIALS: NO PROBLEM**



**GANG  
TOOLING  
Ø 34**

## STAR

Models:

**ECAS 12/20**

**SR 16/20RII**

**SR 20R-RII-RIII**

**SR 32J**

**SV 12/20/32**

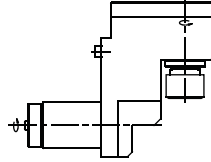
**SV 32J-32JII**

*STAR ref.*

ST.011.34

581-52

**RADIAL  
SET-BACK**

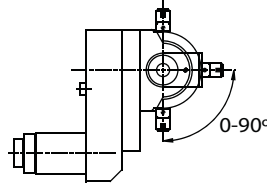


ER-16  
RATIO 1:1  
6.000 RPM MAX.



ST.021.34

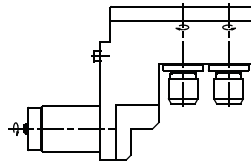
**RADIAL  
ADJUSTABLE**



ER-8  
RATIO 1:3  
24.000 RPM MAX.

ST.029.34A

**RADIAL  
2 SPINDLES  
ADJUSTABLE**

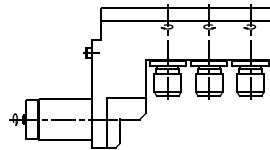


ER-16  
RATIO 1:1  
6.000 RPM MAX.



ST.029.34B

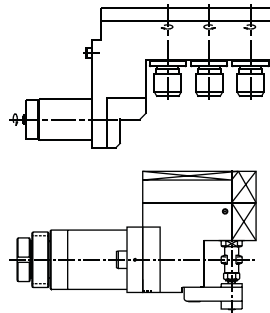
**RADIAL  
3 SPINDLES  
ADJUSTABLE**



ER-16  
RATIO 1:1  
6.000 RPM MAX.

ST.030.34

**SAW-MILL**



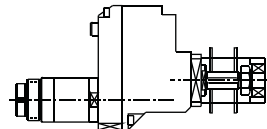
RATIO 1:1  
6.000 RPM MAX.



ST.030.34D

541-54

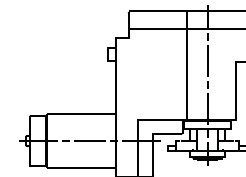
**AXIAL  
SAW-MILL  
DOUBLE**



RATIO 2.67:1  
2.800 RPM MAX.

ST.034.34

**POLYGON  
MAKER**



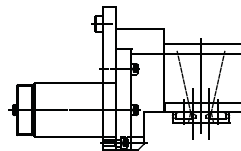
RATIO 1:1  
6.000 RPM MAX.  
(Optional RATIO 2:1)



ST.035.34

541-78

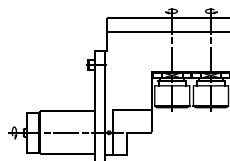
**THREAD  
WHIRLING ± 12.5°**



CUTTING HEAD  
RATIO 1.3:1  
6.000 RPM MAX.

ST.051.34

**RADIAL DOUBLE  
OUTPUT SWIVELING**



ER-16  
RATIO 1:1  
6.000 RPM MAX.

**SPECIALS: NO PROBLEM**





**GANG  
TOOLING  
Ø 22**

## STAR

**ECAS 12/20**

**SR 16/20RII**

**SR 20R-RII-RIII**

**SR 32J**

**KNC 20**

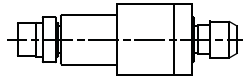
*Models:*

**STAR ref.**

ST.000.22A

541-61

**AXIAL**

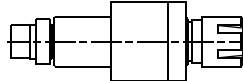


ER-11  
RATIO 1:1  
6.000 RPM MAX.

ST.000.22B

571-61

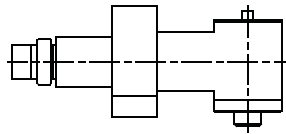
**AXIAL**



ER-16  
RATIO 1:1  
6.000 RPM MAX.

ST.014.22

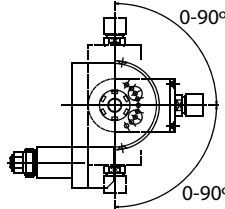
**RADIAL  
REDUCER**



ER-8  
RATIO 1.3:1  
4.500 RPM MAX.

ST.021.22

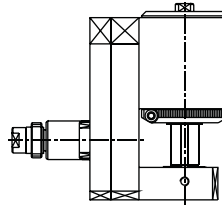
**RADIAL  
ADJUSTABLE**



ER-11  
RATIO 1:1  
6.000 RPM MAX.

ST.030.22

**SAW-MILL**



Ø 13 / Ø 16  
RATIO 2.18:1  
2.700 RPM MAX.



**TURRET  
TOOLING**

## STAR

**SV 12/20**

**KNC 16**

**KNC 20**

**SV 32J**

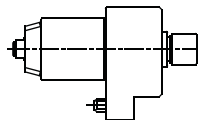
*Models:*

**STAR ref.**

ST.000.20A

221-50

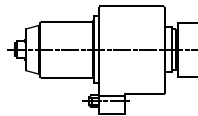
**AXIAL**



ER-16  
RATIO 1:1  
6.000 RPM MAX.

ST.000.20B

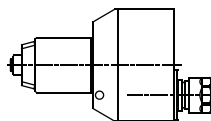
**AXIAL**



ER-25  
RATIO 1:1  
4.000 RPM MAX.  
(COOLANT THROUGH)  
OPTIONAL

ST.006.20

**AXIAL  
OFFSET**



ER-16  
RATIO 1:1  
4.000 RPM MAX.  
(COOLANT THROUGH)  
OPTIONAL



**SPECIALS: NO PROBLEM**





**TURRET  
TOOLING**

# STAR

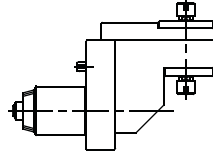
Models: **SV 12/20** **KNC 20**  
**KNC 16** **SV 32J**

*STAR ref.*

ST.008.20A

431-55

**RADIAL  
2 SPINDLES**

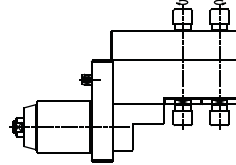


ER-11  
RATIO 1:1  
6.000 RPM MAX.



ST.008.20B

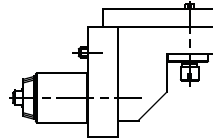
**RADIAL  
4 SPINDLES**



ER-11  
RATIO 1:1  
6.000 RPM MAX.

ST.011.20

**RADIAL  
SET-BACK**



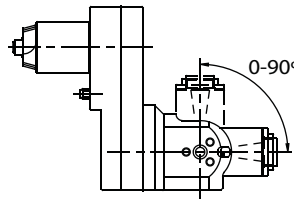
ER-11  
RATIO 1:1  
6.000 RPM MAX.



ST.021.20

221-61

**RADIAL  
ADJUSTABLE**

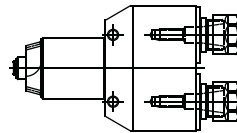


ER-16  
RATIO 1:1  
6.000 RPM MAX.

ST.023.20A

421-51

**AXIAL  
DOUBLE  
OUTPUT**

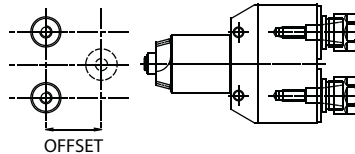


ER-16  
RATIO 1:1  
6.000 RPM MAX.  
(COOLANT THROUGH)  
OPTIONAL



ST.023.20B

**AXIAL  
DOUBLE  
OUTPUT  
OFFSET**

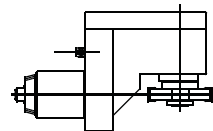


ER-16  
RATIO 1:1.8  
6.000 RPM MAX.  
(COOLANT THROUGH)  
OPTIONAL

ST.034.20

541-91

**POLYGON  
MAKER**

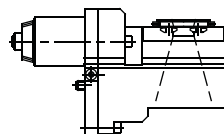


Ø 16  
RATIO 1:1  
6.000 RPM MAX.



ST.035.20

**THREAD  
WHIRLING ± 15°**



CUTTING HEAD  
RATIO 1.5:1  
6.000 RPM MAX.

**SPECIALS: NO PROBLEM**





**TURRET  
TOOLING**

# STAR

Models:

**ECAS 20T  
ECAS 32T**

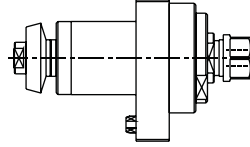
**KNC 32  
SV32**

*STAR ref.*

ST.000.32A

201-50

**AXIAL**



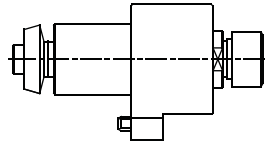
ER-16  
RATIO 1:1  
6.000 RPM MAX.



ST.000.32B

581-51

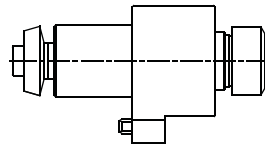
**AXIAL**



ER-20  
RATIO 1:1  
6.000 RPM MAX.

ST.000.32C

**AXIAL**



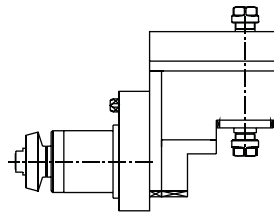
ER-25  
RATIO 1:1  
4.000 RPM MAX.  
(COOLANT THROUGH)  
OPTIONAL



ST.008.32

201-56

**RADIAL  
DOUBLE  
OUTPUT**

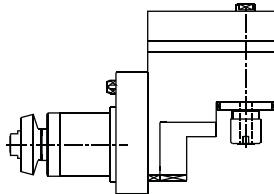


ER-11  
RATIO 1:1  
5.700 RPM MAX.

ST.011.32

201-52

**RADIAL  
SET-BACK**

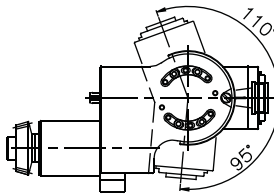


ER-16  
RATIO 1:1  
5.700 RPM MAX.



ST.021.32A

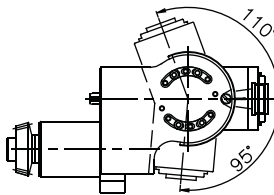
**RADIAL  
ADJUSTABLE**



ER-16  
RATIO 1:1  
8.000 RPM MAX.

ST.021.32B

**RADIAL  
ADJUSTABLE**



ER-20  
RATIO 1:1  
8.000 RPM MAX.



**SPECIALS: NO PROBLEM**







**TURRET  
TOOLING**

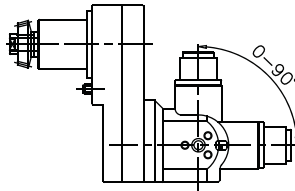
# STAR

Models: **ECAS 20T** **ECAS 32T** **KNC 32** **SV32**

*STAR ref.*

ST.021.32C

**RADIAL  
ADJUSTABLE**



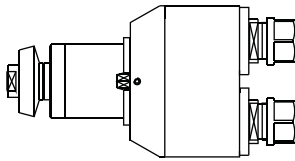
ER-20  
RATIO 1:1  
6.000 RPM MAX.



ST.023.32

431-51

**AXIAL  
DOUBLE  
OUTPUT**

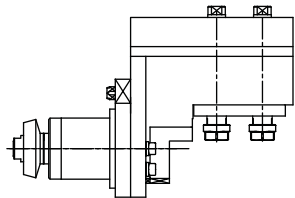


ER-16  
RATIO 1:1  
6.000 RPM MAX.

ST.029.32

581-55

**RADIAL  
DOUBLE  
OUTPUT  
ADJUSTABLE**



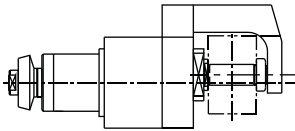
ER-11  
RATIO 1:2  
6.000 RPM MAX.



ST.030.32

431-54

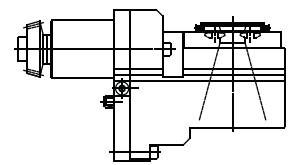
**SAW-MILL**



RATIO 1:0.298  
2.000 RPM MAX.

ST.035.32

**THREAD  
WHIRLING ± 15°**



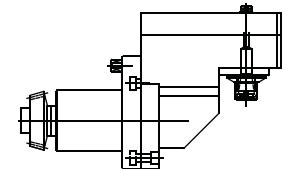
CUTTING HEAD  
RATIO 1.5:1  
6.000 RPM MAX.



ST.051.32A

421-55

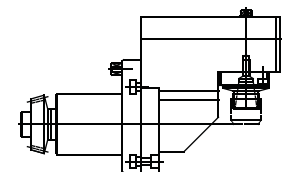
**RADIAL  
SWIVELING  
± 90°**



ER-11  
RATIO 1:1  
6.000 RPM MAX.

ST.051.32B

**RADIAL  
SWIVELING  
± 90°**



ER-16  
RATIO 1:1  
6.000 RPM MAX.



**SPECIALS: NO PROBLEM**

