

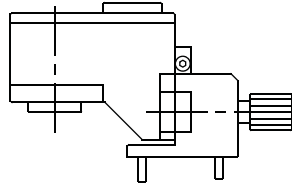


THREAD WHIRLING/TOURBILLONNAGE

Whirling head Ø36

DE.035.10

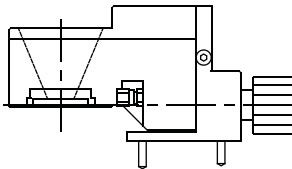
DECO 2000
10a/7a



RATIO 1:1
6.000 RPM MAX.

DE.035.10/22,5

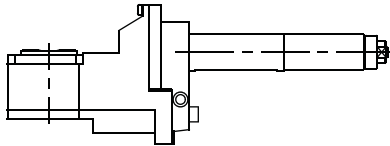
DECO 2000
10a/7a
(± 22,5°)



RATIO 1:1
6.000 RPM MAX.

CZ.035.C16/32

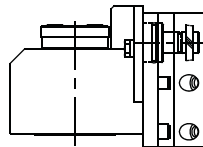
CITIZEN
C16/C32



RATIO 1:1
5.000 RPM MAX.

CZ.035.M12/M16T

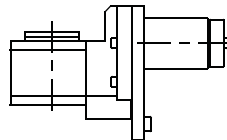
CITIZEN
M12/M16T



RATIO 1.75:1
6.000 RPM MAX.

ST.035.34

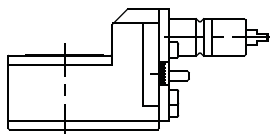
STAR
(GANG TOOLING Ø34)
ECAS 12/20, SR16/20RII
SV12/20/32, SR20R-RII-RIII
SV32J-32JII, SR32J



RATIO 1.3:1
6.000 RPM MAX.

GD.035.GD20

GILDEMEISTER
GD20



RATIO 2:1
6.000 RPM MAX.



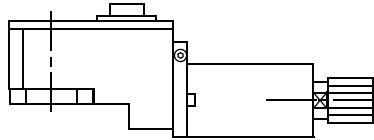
SPECIALS: NO PROBLEM



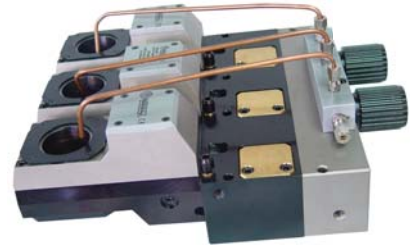
THREAD WHIRLING/TOURBILLONNAGE

Whirling head Ø45

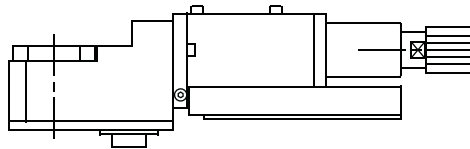
DE.035.20 **DECO 2000**
26a/20a
(STANDARD)



RATIO 1:1
6.000 RPM MAX.



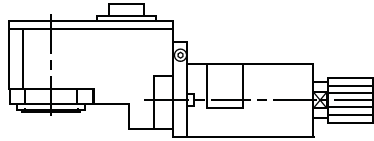
DE.035.20S **DECO 2000**
26a/20a
(SUBSPINDLE)



RATIO 1:1
6.000 RPM MAX.

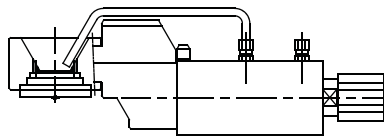


DE.035.20/25 **DECO 2000**
26a/20a
(± 25°)

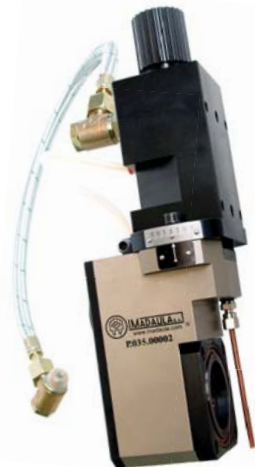


RATIO 1:1
6.000 RPM MAX.

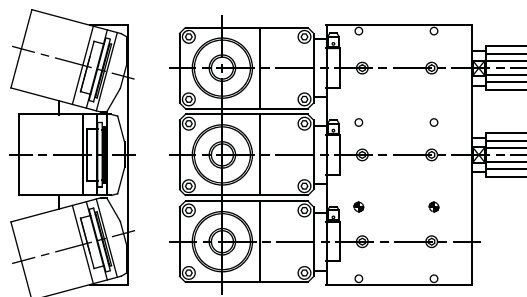
DE.035.20/30 **DECO 2000**
26a/20a
(± 30°)



RATIO 1:1
6.000 RPM MAX.

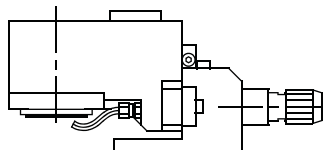


DE.035.20/3 **DECO 2000**
26a/20a
(TRIPLE HEADED)



RATIO 1:1
6.000 RPM MAX.

DE.035.13 **DECO 2000**
13a



RATIO 1:1
6.000 RPM MAX.



SPECIALS: NO PROBLEM



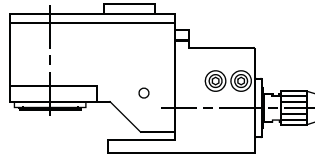


THREAD WHIRLING/TOURBILLONNAGE

Whirling head Ø45

DE.035.13/25

DECO 2000
13a
(± 25°)

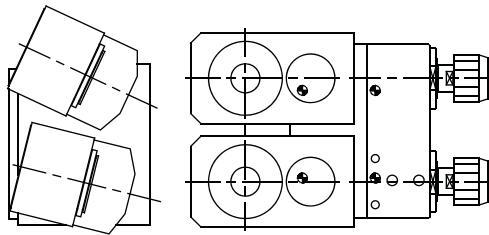


RATIO 1:1
6.000 RPM MAX.



DE.035.13/2

DECO 2000
13a
(DOUBLE HEADED)

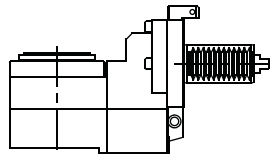


RATIO 1:1
6.000 RPM MAX.



HW.035.STL32H

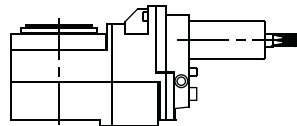
HANWHA
STL32H



RATIO 2:1
6.000 RPM MAX.

HW.035.XD20H

HANWHA
XD20/26H
XD20/26J

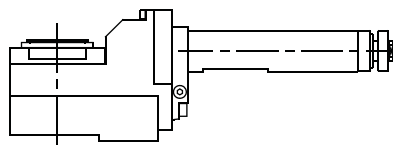


RATIO 1:1
8.000 RPM MAX.



CZ.035.L16/20
L25/32
M12/M16
M20/M32

CITIZEN
L16/L20
L25/L32
M12/M16
M20/M32

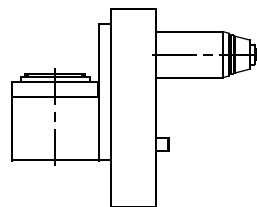


RATIO 1:1
5.000 RPM MAX.



CZ.035.M20/M32T

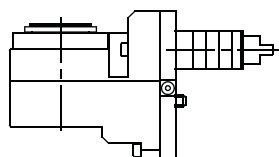
CITIZEN
M20/M32T



RATIO 1:1
6.000 RPM MAX.

NX.035.D

NEXTURN
SA20D/26D/32D



RATIO 1:1
5.000 RPM MAX.

SPECIALS: NO PROBLEM

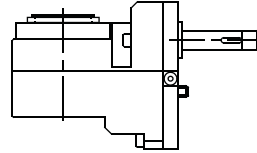


THREAD WHIRLING/TOURBILLONNAGE

Whirling head Ø45

NX.035.X

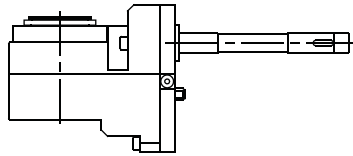
NEXTURN
SA20X/32X/45X



RATIO 1:1
5.000 RPM MAX.

NX.035.E

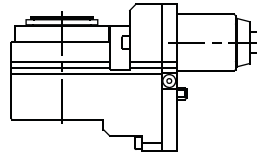
NEXTURN
SA20E/26E/32E/38E



RATIO 1:1
5.000 RPM MAX.

ST.035.20

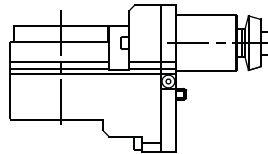
STAR
(TURRET TOOLING)
SV12/20, SV32J
KNC16, KNC20



RATIO 1.5:1
6.000 RPM MAX.

ST.035.32

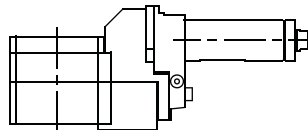
STAR
(TURRET TOOLING)
SV32, ECAS20T
KNC32, ECAS32T



RATIO 1.5:1
6.000 RPM MAX.

HJ.035.HJM

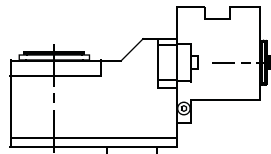
HJM



RATIO 1:1
8.000 RPM MAX.

MH.035.SWING

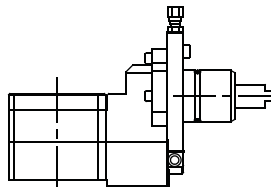
MANURHIN
SWING 1026



RATIO 1:1
6.000 RPM MAX.

MU.035.MT12

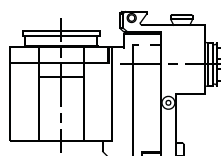
MURATEC
MT12



RATIO 2:1
3.000 RPM MAX.

TR.035.TNL26

TRAUB
TNL-26



RATIO 1.5:1
6.000 RPM MAX.



SPECIALS: NO PROBLEM